

Zoom Meeting Session
1:30 – 3:30 pm

LOG IN INFO:

<https://us02web.zoom.us/j/88295388603?pwd=cml4WDYrTUEyRGZHcEd6WFJleXZCZz09/> Password: U8gmnQ
 Telephone: 8888227517 (US Toll Free) / Conference code: 671120

1:30 CALL MEETING TO ORDER

Welcome / Housekeeping.....*Kevin Smith, Chair, KWIB*
Beam Suntory

Roll Call.....*Debbie Dennison, KWIB Executive Secretary*

Building a Better Kentucky Workforce.....*Governor Andy Beshear*

Cabinet Initiatives

Education and Workforce Development Cabinet (EWDC).....Lt. Governor Jacqueline Coleman, Cabinet Secretary
Cabinet for Health and Family Services (CHFS).....Eric Friedlander, Cabinet Secretary
Labor CabinetJamie Link, Cabinet Secretary
Cabinet for Economic Development (CED).....Kristina Slattery, Deputy Commissioner of Business Development

2:20 BUSINESS, PRESENTATIONS, DISCUSSION AND ACTION RELATED TO STRATEGIC PLAN / OPERATIONS

KWIB New Leadership.....*Stefanie Ebbens Kingsley, Executive Director*

Comments by the KWIB Chair.....*Kevin Smith, Chair*
Beam Suntory

Work Ready Strategic Plan / KWIB Business

Minutes of May 20, 2021 meeting (ACTION REQUIRED)..... *Kevin Smith, Chair*

Local Workforce Development Area Workforce Plan Brief.....*Honor Barker, Deputy Commissioner,*
Department Workforce Investment

2022 WIOA State Plan Modification as Implementation of Strategic Plan.....*Scotty McFarlan, OLLS*

Review of KWIB Mandates, Permissive and Role in State Plan..... *Stefanie Ebbens Kingsley, KWIB*

Broadband Initiative.....*Mary Pat Regan, Deputy Secretary, EWDC*

ThriveKY, non-profit Network..... *Stefanie Ebbens Kingsley, KWIB*
Members of ThriveKY

Data / Metrics update*Scott Secamiglio*
Visual Analytics and Strategy Director, KY STATS

Work Ready Communities (ACTION REQUIRED).....*Lori Ulrich, Committee Chair*
Fleming-Mason Energy

- *Informational Letters of Intent*
- *Certification, Recertification and Extension Recommendations*

- Workforce Participation and Sustainability.....*Amy Luttrell, Committee Chair*
Goodwill Industries
- Education Attainment and Employer Engagement..... *Beth Davisson, Committee Chair*
Kentucky Chamber
- Resource Alignment and Funding.....*Kim Menke, Vice-Chair KWIB / Committee Chair*
Toyota Manufacturing
- Upcoming Meetings – 2022 cadence, where to find meeting information

New Business

Closing Comments.....*Kevin Smith, Chair*

3:30 ADJOURNMENT



WELCOME

KWIB Quarterly Board Meeting

August 19, 2021

“Create a workforce development system that is value driven for employers, aligns education with industry demands, prepares Kentuckians for the future of work and drives economic development.”



Welcome, Introduction & Housekeeping - Kevin Smith, Chair, KWIB

- ▶ This meeting is being recorded and captioning services are available.
- ▶ Guests please keep your line muted, Board Members please keep your line muted when not presenting.
- ▶ In the agenda, there are items marked as *ACTION REQUIRED* which is an opportunity for KWIB board members to vote on business items.
- ▶ We follow Roberts Rules of Order.
- ▶ This is the quarterly business meeting of the KWIB, if you are a guest and have any questions, please reach out to Debbie.Dennison@ky.gov. The meeting minutes will be posted to the KWIB.KY.GOV, which will include attachments of the materials presented here today.

Kevin Smith - CHAIR of KWIB	<i>Jim Beam Brands/Beam Suntory; Bardstown</i>	Kim Humphrey	<i>River View Coal; Morganfield</i>	Jacqueline Korengel	<i>Office of Adult Education; Deputy Director, Statewide</i>
Kim Menke – Vice-Chair, KWIB; Chair - Resource Align / Funding Committee	<i>Toyota; Georgetown</i>	Lt. Governor Jacqueline Coleman	<i>Commonwealth of KY; Education & Workforce Development; Cabinet Secretary</i>	Jonathan Webb	<i>AppHarvest; Morehead</i>
Amy Luttrell – Chair; Workforce Participation and Sustainability Comm	<i>Goodwill; Louisville</i>	Lynn Parrish	<i>Bit Source; Pikeville</i>	Micheal Hale	<i>Barren County Judge Exec; Glasgow</i>
Beth Davisson – Chair; Ed attainment/ Employer Engagement committee	<i>Chamber of Commerce; Louisville</i>	Mary Pat Regan	<i>Education & Workforce Development Cabinet; Deputy Secretary</i>	Julie Whitis	<i>Ignite Institute; Ft. Thomas</i>
Lori Ulrich – Chair; Work Ready Communities Committee	<i>Fleming-Mason Energy; Mayslick</i>	Robert Blythe	<i>Mayor, City of Richmond; Richmond</i>	Karen Trial	<i>Hitachi Automotive; Berea, Harrodsburg</i>
Heidi Margulis - Chair Training and Communication	<i>Humana; Louisville</i>	Michael Buckentin	<i>Logan Aluminum; Bowling Green</i>	Keith Sparks	<i>EnerFab; Grayson</i>
Scott Pierce	<i>Workforce / Labor; Jamestown</i>	Bobby McCool	<i>Representative, 97th District, Leg. Research Comm.; Van Lear</i>	Jimmy Higdon	<i>Senator, 14th District Leg. Research Comm.; Lebanon</i>
Jimmy Staton	<i>Southern Star Energy; Owensboro</i>	Rob Southard	<i>Southern Star Energy; Owensboro</i>	Sharon Price	<i>Community Action; Lexington, Carlisle, Cynthiana, Paris</i>
Cora McNabb	<i>Office of Vocational Rehabilitation – Executive Director, Statewide</i>	Ryan Holmes	<i>EHI Consultants; Lexington</i>	Suhas Kulkarni	<i>Indus, Inc.; Louisville</i>
Dianne Owen	<i>Four Rivers Foundation; South Fulton</i>	Sadiqa Reynolds	<i>Louisville Urban League Louisville</i>	Bo Matthews	<i>Superintendent Barren County Schools; Glasgow</i>
Aaron Thompson	<i>Council on Post-Secondary Education; Richmond</i>	Jamie Link	<i>Dept. of Labor; Cabinet Secretary</i>	Terry Sexton	<i>Labor Rep; Grayson</i>
Jason Glass	<i>Dept. of Education; Commissioner and Chief Learner</i>	Larry Hayes	<i>Economic Development Cabinet; Cabinet Secretary</i>	Todd Dunn	<i>Labor Rep; Louisville</i>
Governor Andy Beshear	<i>Commonwealth of KY; Statewide</i>	J. Michael Brown	<i>Secretary of the Governor's Cabinet Commonwealth of KY</i>	Tony Georges	<i>UPS; Louisville</i>
Paul Czarapata,	<i>President - KCTCS; Versailles</i>				

Governor Andy Beshear

- ▶ Kentucky Workforce Innovation Board
Workforce Partner Welcome & Remarks

Cabinet Updates from KWIB's State Partners

- ▶ Education and Workforce Development Cabinet (EWDC)
Jacqueline Coleman, Lieutenant Governor / Cabinet Secretary
- ▶ Cabinet for Health and Family Services (CHFS)
Eric Friedlander, Cabinet Secretary
- ▶ Labor Cabinet,
Jamie Link, Cabinet Secretary
- ▶ Cabinet for Economic Development
Kristina Slattery, Deputy Commissioner of Business Development



Introduction & Updates from Stefanie Ebbens Kingsley, Executive Director, KWIB

KWIB Business Meeting Agenda

- ▶ KWIB Chair Update, Kevin Smith, Beam Suntory
 - ▶ Minutes of May 20, 2021 KWIB Meeting (ACTION REQUIRED)

- ▶ Local & Regional Plan Updates, Honor Barker, Deputy Commissioner, DWI
- ▶ WIOA 2022 Two-Year State Plan Modification, Scotty McFarlan, Attorney, EWDC OLLS
- ▶ KWIB Role in 2022 State Plan Modification, Stefanie Ebbens Kingsley, Executive Director, KWIB
- ▶ Broadband Team Updates, Deputy Secretary of Education & Workforce Development, Mary Pat Regan
- ▶ ThriveKY, Introduction , Dustin Pugel, Senior Policy Analyst,
Kentucky Center for Economic Policy (KCEP)

Department of Workforce Investment

Committee Reviews
of Local and Regional Plans
for 2022-2025

WIOA (Workforce Innovation and Opportunity Act) 20 CFR 679.500
requires that Local Workforce Development Areas submit 4-year
Local (L) Comprehensive and Regional (R) Innovation Plans



PLAN CRITERIA:

- (L)
 - Economic and Workforce Analysis
 - Strategic Vision and Goals
 - Alignment of Local and Regional Area Partnerships and Investment Strategies
 - Program Design and Evaluation
 - Compliance/ Performance/Administrative Cost
 - Additional Elements

- (R)
 - Identification of opportunities for regional collaboration and innovation
 - Incorporation of priorities and opportunities identified with the Local Plan
 - Outline of procedures for collection and analysis of regional labor market information

All plans were submitted timely, meeting the established deadline of April 30, 2021



Two Areas received Approval upon initial submission

EKCEP and Northern Kentucky



The remaining **8** were **Approved CONTINGENT** upon change

EAST REGION - EKCEP, TENCO

REGIONAL PLAN -- no deficiencies  “largely buttoned up”

EKCEP Local Plan -- Approved with no deficiencies

★ Commended for its workforce vision and partner alignment

TENCO Local Plan -- Approved CONTINGENT upon changes

- 1) Elaborating on “soft skills” training
- 2) More detail of analysis of skills needed for employment and training in the area
- 3) Additional information related to the increased relationship with and reliance upon KCC staff

SOUTH REGION - Cumberlands, South Central

REGIONAL PLAN

- 1) Lacks required information related to proposed transportation solutions
- 2) Needs to address other supportive services aside from transportation
- 3) Needs to describe the two MOUs noted in the plan
- 4) Greater explanation/analysis of workforce development activities in the region

CUMBERLANDS Local Plan -- APPROVED contingent upon changes

- 1) Adding reference to performance measures
- 2) Elaboration with regard to expansion of access to employment, training, education, and supportive services
- 3) Greater detail regarding strategies to implement the operational goals of the local One-Stop Delivery System
- 4) Specifics related to how the local board will collaborate with Kentucky Skills U

★ did a nice job ascertaining in-demand sectors expected growth and associated skills and education needed, and a good job laying out its Strategic Vision and Goals to include a discussion of defined objectives/activities/success for each goal and the direct impact of COVID within the region

SOUTH CENTRAL Local Plan - APPROVED contingent upon changes

- 1) Additional details related to their Priority of Service Policy
- 2) Referencing all, rather than some, strategic goals and perhaps tie back in some way to the Plan's Strategic Objectives

★ their plan was exemplary in stating their Vision and Strategic Goals and listing several objectives for each goal and did a nice job compiling demographic, employment trends, industry, occupation, and other data

CENTRAL REGION - West Kentucky, Green River

REGIONAL PLAN -- needs to specify resources coordinated by West KY and Green River and explain how those resources are to be shared with customers

★ a fantastic job with regional planning efforts, having made excellent use of supporting evidence to back up stated goals, providing a good perspective on what today's workers face in a post-pandemic world and how and where they can help to plug the holes.

WEST KENTUCKY Local Plan -- Approved CONTINGENT upon changes

- 1) Additional detail regarding required skills for high demand occupations

GREEN RIVER Local Plan -- Approved CONTINGENT upon changes

- 1) Update labor force data
- 2) Additional information on pandemic-related challenges
- 3) Note strategies for removing identified barriers
- 4) Detail how the plan to “incorporate demand driven data” will be accomplished
- 5) Specify how the One-Stop implementation works in Green River
- 6) Describe the implementation plan related to the identified Priority of Service (POS) goal
- 7) Identification of partnerships in sync with the noted plan to diversify funding
- 8) Details regarding their statewide goals alignment

★ Kudos for their description of the Youth program; Entrepreneurial network and support is awesome; Identification of shrinking money in concert with higher needs and therefore more strategic use of funds was impressive; as was their articulation of specific goals and concrete steps to achieve those goals.

NORTH CENTRAL REGION – Northern Kentucky, Bluegrass, Lincoln Trail

REGIONAL PLAN -- no deficiencies noted ;  Kudos for using data to their benefit

NORTHERN KENTUCKY Local Plan -- APPROVED with no deficiencies

★ Plan was comprehensive, analytical and very well done; commendable use of virtual statewide workshops to ensure collaboration and idea exchange of what has been successful other places; recognition of weakness; comprehending need for diversity, equity and inclusion

BLUEGRASS Local Plan - Approved CONTINGENT upon addition of a timeline for plans to implement strategic vision and goals

★ it was a very nice visual presentation of information; utilized some innovative programming and procedures during the pandemic; uniquely identifies real collaboration with Labor UI, RESEA & Trade, has implemented an innovative referral through Google program for core partner referrals; Transitions 2 Transformation program is great; Small Business summit and Juliet Market partnership is a creative form of assistance; a very smart and realistic approach to reach and support rural customers through fully virtual KCC; KCC access at the VA center and Stand Down events to target Veterans are creative solutions to meeting that priority of service population.

LINCOLN TRAIL Local Plan -- Approved CONTINGENT upon changes

- ★
- 1) notation of performance measures and pandemic impact upon those measures
 - 2) identification of strategies for working with Core partners
 - 3) reference of co-enrollment or cross-training
 - 4) detail describing how to partner with Post Secondaries
 - 5) specifics related to plan to reach targets for low-income, benefits or barriers

an overall well thought out plan; consistently solid particularly with its vision and goals; the degree of coordination and cooperation between the Area and its Economic Development agencies is superb

KentuckianaWorks

formerly in the North Central Region for Planning Purposes

Approved to participate in a bi-state agreement with Southern Indiana Region 10
Exempted from Regional Planning efforts in Kentucky

Local Plan -- Approved CONTINGENT upon changes

- 1) notation of when the KentuckianaWorks Local Plan was published for Public Comment as required by WIOA
- 2) Reference of performance measures and plans to meet those measures
- 3) Addition of information related to how KW is expanding access to job services, education/ training, and supportive services
- 4) Clarification of how Performance Measurement data is gathered
- 5) Noting a timeline for completion of project tasks



- Solid youth partnerships and planning
- Solid plan to make up for \$2.1 million less in DOL federal funding for FY22
- Innovative approach to workforce development initiatives



- Deliver workforce services in flexible, seamless manner to engage customers, effectively connect job supply & demand.
- Align education & workforce programs with labor market demands to connect job creators with qualified employees & prepare individuals for productive employment.
- Leverage new & existing strategic partnerships and innovative communication to engage, support, and grow the workforce.
- Align internal and external resources to ensure efficient allocation across programs & initiatives.

What is the KWIB's Role in creating or modifying the WIOA State Plan?

- I. KWIB & state staff will engage all stakeholders in discussions about how COVID-19 impacted implementation of the 2020 State Plan, and take feedback on recommended changes. KWIB staff will hold simultaneous discussions with core partners. (September 1 – November 19, 2021)
- II. KWIB staff will organize raw data, identify trends, and summarize the public comments/suggestions received from all ten local areas, their partners, and service providers, and present the cumulative data to the KWIB. (December 20, 2021)
- III. KWIB Executive Committee will meet to review the recommendations, and assign the matter to a Strategic Plan/State Plan working group. The goal will be to make recommendations to the full KWIB about what changes to state level strategy are needed to prepare an educated and skilled workforce, in a post pandemic economy. (February 2022)

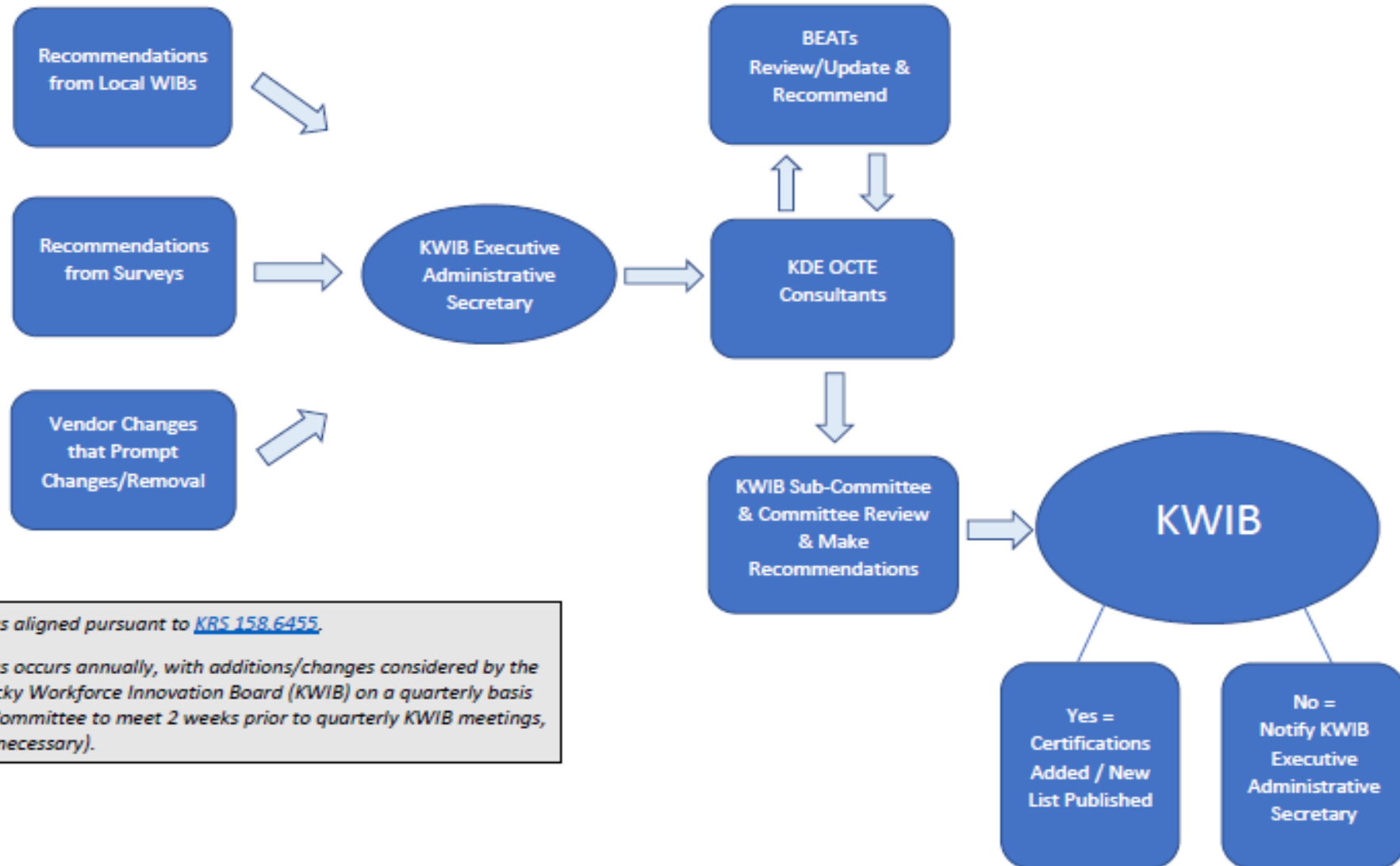


Committee Updates

- ▶ Metrics Committee, Scott Secamiglio, Visual Analytics and Strategy Director, KY STATS
- ▶ Work Ready Communities, Lori Ulrich, Fleming-Mason Energy - Committee Chair
(ACTION REQUIRED)
- ▶ Workforce Participation & Sustainability, Amy Luttrell, Goodwill Industries - Committee Chair
- ▶ Education Attainment & Employer Engagement, Beth Davisson, Kentucky Chamber - Committee Chair
- ▶ Resource Alignment and Funding, Kim Menke, Toyota Manufacturing - Committee Chair
- ▶ Preview of Fall 2021 Collaborative & 2022 Meeting Schedule, Stefanie Ebbens Kingsley, KWIB



KENTUCKY'S K-12 INDUSTRY CERTIFICATION APPROVAL PROCESS



Process aligned pursuant to [KRS 158.6455](#).
Process occurs annually, with additions/changes considered by the Kentucky Workforce Innovation Board (KWIB) on a quarterly basis (Sub-Committee to meet 2 weeks prior to quarterly KWIB meetings, when necessary).

KWIB Sector Strategies sub-committee

Chair, LaKisha Miller

KWIB Administrative Staff
 – Stefanie Ebbens
 Kingsley, Jacob
 McAndrews, Sara Jagers

LaKisha Miller - Chair	<i>Kentucky Chamber</i>
Kristi Putnam	<i>AppHarvest</i>
Tony Georges	<i>UPS</i>
Kim Menke	<i>Toyota</i>
Kim Humphrey	<i>Alliance Coal</i>
Lisa Banner	<i>Beam Suntory</i>
Todd Schmiedeler	<i>Trilogy</i>
Rick Smith	<i>CPE</i>
Dr. OJ Oleka	<i>AIKCU</i>
Julie Whitis	<i>Ignite Institute</i>
Bo Matthews / Justin Browning	<i>Barren Co Schools</i>
Steven Rudolf	<i>Baptist Health</i>
Tim Ernst	<i>East and West Brook</i>
Brian Lovell	<i>Union County Schools</i>
John Greene	<i>Keeneland</i>
Rob Southard	<i>Southern Gas</i>
Zach Gaubert	<i>Ky Chamber</i>
Kris Williams	<i>KCTCS</i>
Tara Johnson-Noem	<i>NKADD</i>
Jon Soward	<i>South Central Workforce</i>
Scott Secamiglio	<i>KY STATS</i>
Jessica Cunningham	<i>KY STATS</i>
Stefanie Ebbens Kingsley	<i>KWIB Executive Director</i>
Jacob McAndrews	<i>KWIB Coordinator</i>
Sara Jagers	<i>KWIB Coordinator</i>

Announcement- LUL Health Fair - August 21st



The banner features the Louisville Urban League logo on the left, which includes the text '100th Anniversary Louisville Urban League'. To the right of the logo, a green box contains the text 'August 21 | 10AM - 4PM' and 'Norton Healthcare Sports & Learning Center'. Below this, the words 'COMMUNITY HEALTH FAIR' are written in large, bold, blue capital letters. The bottom section of the banner is a grid of four images: a healthcare worker administering a vaccine, a white mobile health unit with 'bienestar' and 'empowering people to wellness' written on it, a 'BLACK MARKET' logo over fresh produce, and a woman smiling while receiving a dental procedure.

DETAILS

Date:

August 21

Time:

10:00 am - 4:00 pm EDT

Event Categories:

Education, Health, Housing,
Jobs, Justice, LUL Guild, LUL
SLC, LUL Young
Professionals, Special Events,
Vote

ORGANIZERS

Louisville Urban League

Norton Healthcare

Private: Humana. Inc.



Questions? Want to share information? Contact us:

- *Kevin Smith, Chair - kevin.smith@beamsuntory.com*
- *Stefanie Ebbens Kingsley, Executive Director- sebbenskingsley@ky.gov*

Phone: 502-892-9900

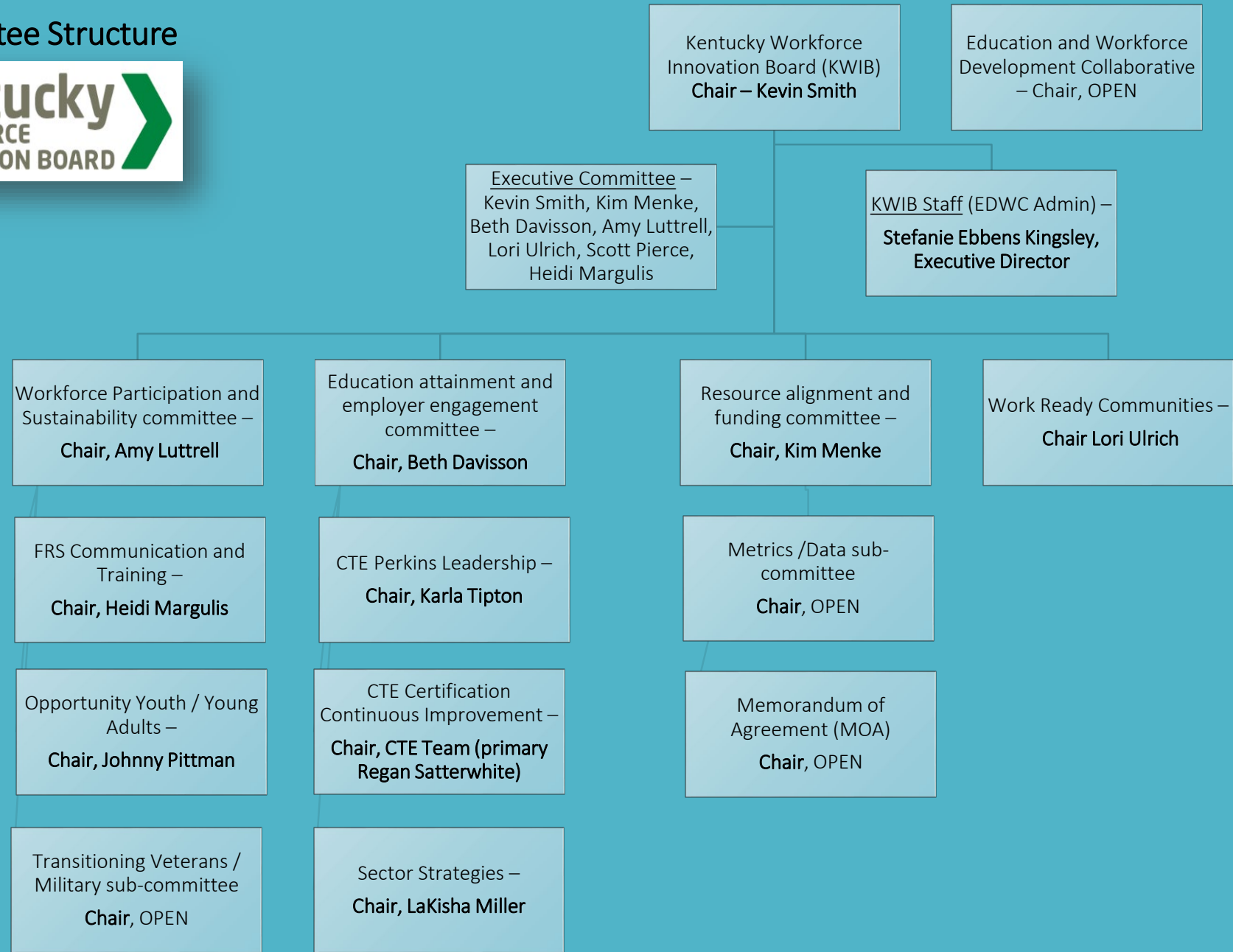
- *Debbie Dennison - debbie.dennison@ky.gov*

Phone: 502-871-2752

*Stay tuned for other upcoming announcements and **Collaborative meeting invitation***

Recording of this and all committee meetings are available at
<https://kwib.ky.gov>

KWIB Committee Structure



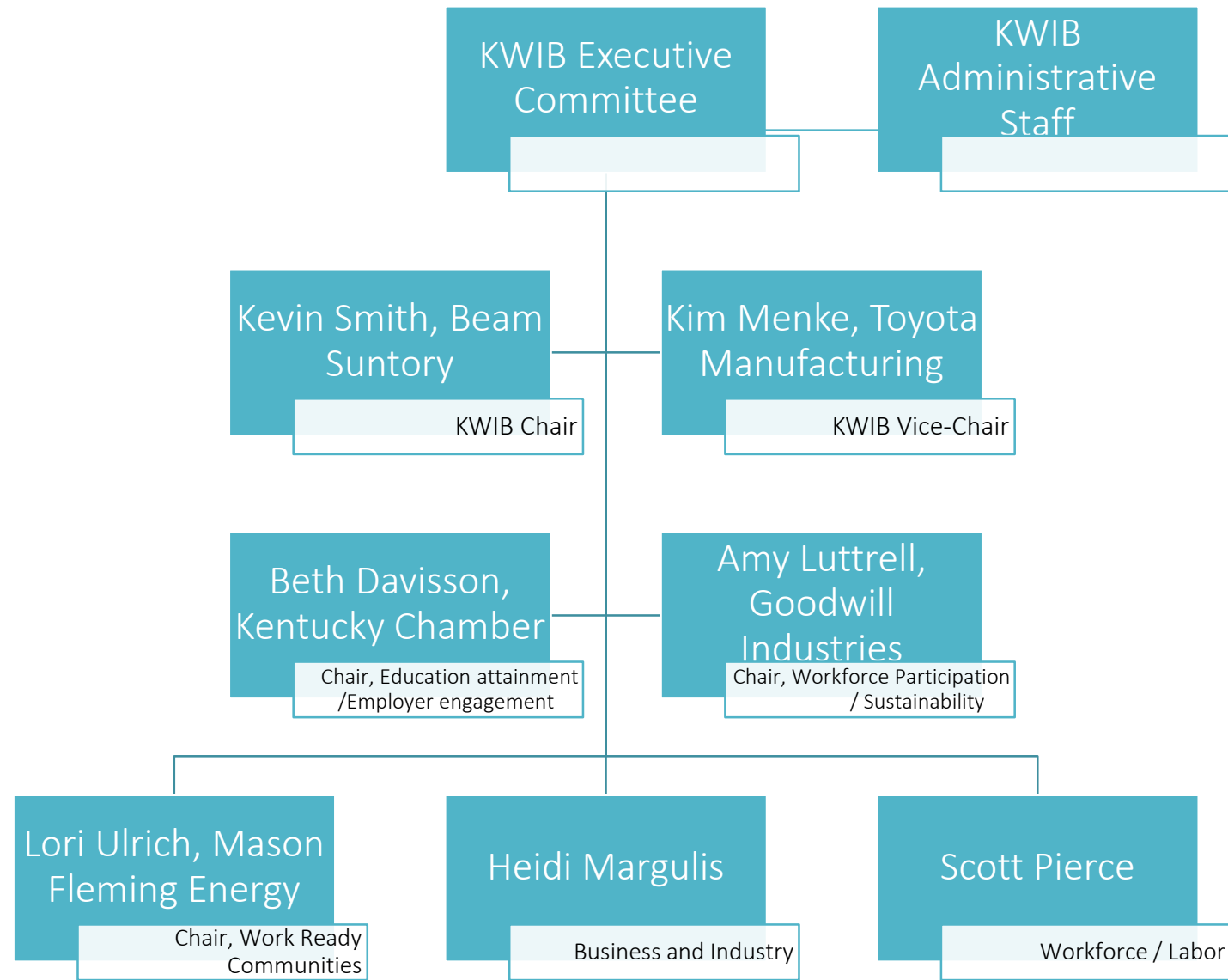
2020 -2021 Kentucky Workforce Innovation Board Members (KWIB)



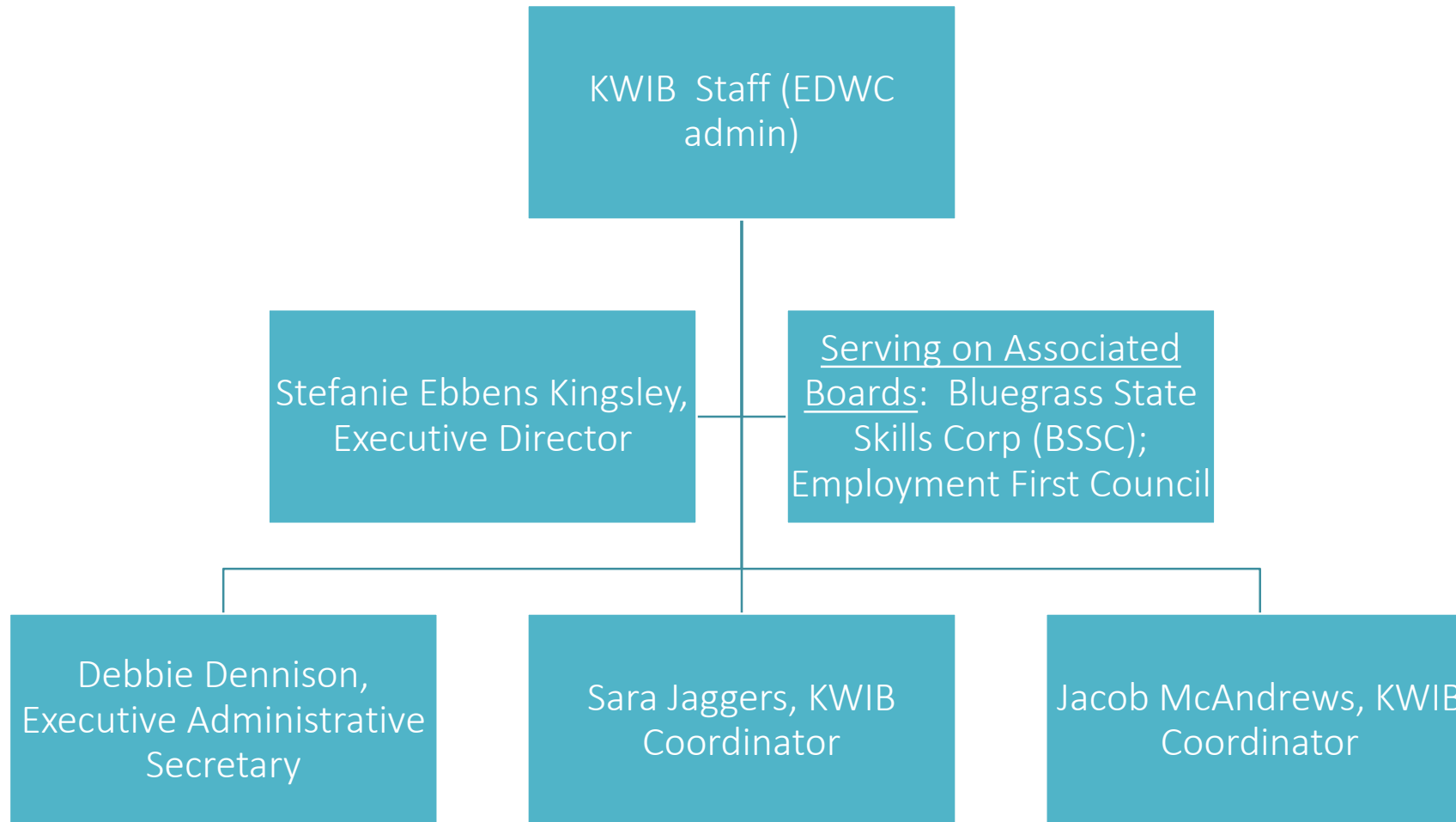
Kevin Smith - CHAIR of KWIB	<i>Jim Beam Brands/Beam Suntory; Bardstown</i>	Kim Humphrey	<i>River View Coal; Morganfield</i>	Dr. Jacqueline Korengel	<i>Office of Adult Education; Deputy Director, Statewide</i>
Kim Menke – Vice-Chair, KWIB; Chair - Resource Align / Funding Committee	<i>Toyota; Georgetown</i>	Lt. Governor Jacqueline Coleman	<i>Commonwealth of KY; Education & Workforce Development; Cabinet Secretary</i>	Jonathan Webb	<i>AppHarvest; Morehead</i>
Amy Luttrell – Chair; Workforce Participation and Sustainability Comm	<i>Goodwill; Louisville</i>	Lynn Parrish	<i>Bit Source; Pikeville</i>	Micheal Hale	<i>Barren County Judge Exec; Glasgow</i>
Beth Davisson – Chair; Ed attainment/ Employer Engagement committee	<i>Chamber of Commerce; Louisville</i>	Mary Pat Regan	<i>Education & Workforce Development Cabinet; Deputy Secretary</i>	Dr. Julie Whitis	<i>Ignite Institute; Ft. Thomas</i>
Lori Ulrich – Chair; Work Ready Communities Committee	<i>Fleming-Mason Energy; Mayslick</i>	Robert Blythe	<i>Mayor, City of Richmond; Richmond</i>	Karen Trial	<i>Hitachi Automotive; Berea, Harrodsburg</i>
Heidi Margulis - Chair Training and Communication	<i>Humana; Louisville</i>	Michael Buckentin	<i>Logan Aluminum; Bowling Green</i>	Keith Sparks	<i>EnerFab; Grayson</i>
Scott Pierce	<i>Workforce / Labor; Jamestown</i>	Bobby McCool	<i>Representative, 97th District, Leg. Research Comm.; Van Lear</i>	Jimmy Higdon	<i>Senator, 14th District Leg. Research Comm.; Lebanon</i>
Jimmy Staton	<i>Southern Star Energy; Owensboro</i>	Rob Southard	<i>Southern Star Energy; Owensboro</i>	Sharon Price	<i>Community Action; Lexington, Carlisle, Cynthiana, Paris</i>
Cora McNabb	<i>Office of Vocational Rehabilitation – Executive Director, Statewide</i>	Ryan Holmes	<i>EHI Consultants; Lexington</i>	Suhas Kulkarni	<i>Indus, Inc.; Louisville</i>
Dianne Owen	<i>Four Rivers Foundation; South Fulton</i>	Sadiqa Reynolds	<i>Louisville Urban League Louisville</i>	Bo Matthews	<i>Superintendent Barren County Schools; Glasgow</i>
Dr. Aaron Thompson	<i>Council on Post-Secondary Education; Richmond</i>	Jamie Link	<i>Labor Cabinet; Cabinet Secretary</i>	Terry Sexton	<i>Labor Rep; Grayson</i>
Dr. Jason Glass	<i>Dept. of Education; Commissioner and Chief Learner</i>	Larry Hayes	<i>Economic Development Cabinet; Cabinet Secretary</i>	Todd Dunn	<i>Labor Rep; Louisville</i>
Governor Andy Beshear	<i>Commonwealth of KY; Statewide</i>	J. Michael Brown	<i>Secretary of the Governor's Cabinet Commonwealth of KY</i>	Tony Georges	<i>UPS; Louisville</i>
Dr. Paul Czarapata	<i>President - KCTCS; Versailles</i>				

August 1, 2021

Kentucky Workforce Innovation Board (KWIB) Executive Committee



KWIB Administrative Staff administratively associated with the Education and Workforce Development Cabinet



KWIB Workforce Participation and Sustainability Committee

Co-Chair, Amy Luttrell
Co-Chair, Jon Davidson

KWIB Administrative Staff
– Stefanie Ebbens Kingsley,
Jacob McAndrews, Debbie
Dennison

Amy Luttrell - CHAIR (KWIB)	Goodwill Industries	Dr. Bob Jackson	KY Council on Post-Secondary Education / Conference of the Presidents
Jon Davidson - CHAIR (Collaborative)	Kentucky Housing Corporation	Dr. Jason Glass / David Horseman (proxy)	Kentucky Department of Education
Edgardo Mansilla	Americana World Community Center	Kristin Porter	Kentucky Justice & Public Safety
Judge Exec. Micheal Hale	Barren County Judge Exec	Laurie Mays	KY Chamber Foundation
Lynn Parrish	B&I - Bit Source	Todd Dunn	Labor Representative
Heidi Margulis	Business and Industry Consultant	Michael Buckentin (David Fusting)	Logan Aluminum
Buddy Hoskinson	Director - Dept of Labor - UI services	Dr. Jacquelyn Korengel	Office of Adult Education (KY Skills)
Ryan Holmes	EHI Consultants	Cora McNabb	OVR
Michael Gritton	Executive Director - Kentuckiana Works Workforce Development Board	Scott Secamiglio	Visual Analytics and Strategy Director - KY Stats
Jessica Cunningham	Executive Director - KY Stats	Myra Wilson	LWDA Director - Cumberlands
Jeremy Faulkner	TENCO	Zach Morgan	KY Chamber
Karen Trial	Hitachi	Trace Chesser	USA Cares
Julie Whitis	Ignite Institute	Jon Sowards	LWDA Director -S. Central
Suhas Kulkarni	Indus, Inc.	Johnny Collett	HDI - UK
Shauna King-Simms	KCTCS	Jamie Link / Vickie Wise (proxy)	Dept of Labor
Dr. Paul Czarapata	KCTCS	Stefanie Ebbens Kingsley	KWIB ED
Debbie Dennison	KWIB	Jacob McAndrews	KWIB Coordinator

KWIB FRS Communication and Training sub-committee

Chair, Heidi Margulis

KWIB Administrative Staff – Sara Jagers, Debbie Dennison

Heidi Margulis - CHAIR	<i>Humana</i>
Amy Luttrell	<i>Goodwill Industries</i>
Jessica Cunningham	<i>KY Stats</i>
Jon Davidson	<i>KY Housing Corporation</i>
Madisen Webb	<i>Dept of Education and Workforce Investment</i>
Anna Larson	<i>KY Skills U - Office of Adult Ed</i>
Kevin Middleton	<i>United Way</i>
	<i>EWDC Communication?</i>
Carrie Banahan	<i>CHFS - Deputy Secretary</i>
Dena Burton	<i>DJJ - Juvenile Justice</i>
Dr. Renee Fister	<i>Murray State University</i>
Amanda Flanary	<i>Early Childhood Education</i>
Shauna King-Simms	<i>KCTCS - Executive Director for Transitions and Pathways</i>
Sherry Johnson	<i>LWDA Director (representing the 10t)</i>
Jason Dunn	<i>Dept. for Community Based Services</i>
John Mountjoy	<i>HeadStart - Director</i>
Todd Trapp	<i>CHFS / DCS</i>
Mike Riley	<i>Bluegrass ADD</i>
Denise Dials	<i>TENCO</i>
Jodi Rafferty	<i>Green River ADD</i>
Myra Wilson	<i>Cumberlands LWDA Dir</i>
Amanda Curry	<i>Job Corps Director (rep the 7)</i>
Beth Milburn	<i>KDLA (Libraries)</i>
Andrea Miller	<i>KCADV (Coalition against Dom. Violence)</i>
Jessica Fletcher	<i>Prichard Committee</i>
Wilbur, Lorraine	<i>CHFS DCBS DPP</i>
Kris Stevens	<i>KY Stats (Education)</i>
Sara Jagers	<i>KWIB Coordinator</i>
Debbie Dennison	<i>KWIB</i>

KWIB Opportunity Youth / Young Adults sub-committee

Chair, Johnny Pittman

KWIB Administrative Staff – Debbie Dennison, Sara Jagers

Johnny Pittman - CHAIR	<i>Oxmoor Auto Group</i>
Amy Luttrell	<i>Goodwill</i>
David Horseman	<i>KDE</i>
Shauna King-Simms	<i>KCTCS</i>
Cora McNabb	<i>OVR</i>
Madison Webb	<i>Dept of Workforce Investment - OCD</i>
Anna Larson	<i>KY Skills U</i>
Kristin Harrod	<i>Justice & Public Safety</i>
Heidi Miller	<i>CDT - Foster Youth advocate</i>
Scott Secamiglio	<i>KYSTATS</i>
Melissa Goins	<i>FRYSCS</i>
Mary Ann Jennings	<i>CHFS</i>
tbd	<i>DOC</i>
Carrie Banahan	<i>CHFS</i>
Renee Fister, Ph.D.	<i>Murray State University</i>
Jonathan Kohn	<i>United Way</i>
Tiffanie Reeves	<i>Bluegrass ADD</i>
Dena Burton	<i>KY Dept of Juvenile Justice</i>
Christy Rogers	<i>Retired Asst Superintendent - Jefferson County schools</i>
Lee Lingo	<i>Ky Association of Manufacturers</i>
Matt Fisher	<i>Jefferson County schools</i>
Charles Worth McLeod	<i>Business Owner/ Youth advocate</i>
Mary Taylor	<i>KDE – Career and Tech Education</i>
Monica Duvall	<i>Western Kentucky University</i>
Jodi Rafferty	<i>Green River LWDA Director</i>
Denise Dials	<i>TENCO LWDA Director</i>
Harper Smith	<i>Kentucky Chamber</i>
Andrew Chrzanowski	<i>Ford - Regional Director</i>
Mackenzie Durbin	<i>SE Church - Youth advocate</i>
Pastor Eric Lutz	<i>MS Pastor for Southeast in Oldham</i>
Michelle DeJohn	<i>Executive Director OEAS</i>
Gayle Hilleke	<i>ED AmeriCorps of Kentucky</i>
Debbie Dennison	<i>KWIB</i>
Sara Jagers	<i>KWIB Coordinator</i>

August 1, 2021

Transitioning veterans / Military sub-committee

Chair, Jason
Hutchinson

KWIB Administrative
Staff – Jacob
McAndrews, Debbie
Dennison

Jason Hutchinson	<i>Education & Workforce Dev Cab</i>
Buddy Hoskinson	<i>Unemployment Insurance</i>
Charles Newton	<i>KY National Guard - Tuition Assistance</i>
tbd	<i>US Dept of Labor - VETS</i>
Gwen Hacker	<i>KCTCS</i>
Jennifer Miller for Bryan Combs	<i>KY National Guard - Education Services Officer</i>
Mike Richie	<i>Yellow Ribbon Family Services</i>
Joe Brummett	<i>KY National Guard - Career Readiness</i>
April Brown	<i>Dept for Veterans Affairs</i>
Kelly Loring	<i>Army National Guard - Family Readiness</i>
Dr. Kris Williams	<i>KCTCS</i>
Lala Williams	<i>Cabinet of Health & Family Services</i>
Linda Larson	<i>Military One Source</i>
OPEN	<i>Dept of Economic Development</i>
Marty Hammons	<i>Dept of Workforce Investment</i>
Matthew Boone SSG	<i>KY National Guard - Bill Manager</i>
tbd	<i>KY Justice & Public Safety</i>
Maribeth Schneber-Rhemrev	<i>CSBG State Assistance Director</i>
Natalie Gibson	<i>KCTCS</i>
Rebecca Wood	<i>Military One Source</i>
Rick Schad	<i>Dept for Veterans Affairs</i>
Rick Johnson	<i>KY VALLO</i>
Rusty Mardis	<i>USAF Veteran</i>
Sheila Clark	<i>West KY Workforce Board - Pennyrile ADD</i>
Major Stephen Martin	<i>KY National Guard - Public Affairs</i>
BG Bullard	<i>KY Commission on Military Affairs</i>
Dr. Tamara Hullender for Mr. Michael Reynolds	<i>KY National Guard - Education Services Specialist</i>
William Seehorn	<i>DOL</i>
Monica Acob	<i>KDLA</i>
Josh Williams	<i>University of Louisville</i>
Jacob McAndrews	<i>KWIB Coordinator</i>
Debbie Dennison	<i>KWIB</i>

August 1, 2021

KWIB Education attainment & Employer engagement Committee

Chair, Beth Davisson

KWIB Administrative Staff

– Debbie Dennison, Sara Jagers, Stefanie Ebbens Kingsley

Beth Davisson - CHAIR	KY Chamber Foundation	Jonathan Webb	AppHarvest
Dr. Aaron Thompson	Council on Post-Secondary Education	Dr. Dallas Kratzer	Cybersecurity and Workforce Development Veteran Outreach
Scott Pierce	Labor	Jessie Schook	KCTCS
Kris Williams	KCTCS	Kara McFadyen	OTCS / Board of Regents
Misty Edwards	KY Commission on Proprietary Education	Senator Jimmy Higdon	Senator, 14th District Leg. Research Comm.
Jason Luring	Catalent Pharma Solutions	Tony Georges	UPS
Amy Neal	Early Childhood Development Council	Todd Schmiedeler	Chief Engagement and Innovation Officer, Trilogy Health Services
Dr. Mike Stacy	Kenton County Schools	Harper Smith	KY Chamber Workforce Center Manager
Dr. OJ Oleka	Association of Independent KY Colleges & Universities	Sara Tracy	Senior TPM Project Manager, KY Chamber Workforce Center
Kim Humphrey	Alliance Coal	Julie Whitis	Ignite Institute
Mason Dyer	Association of Independent KY Colleges & Universities	Michael Buckentin	Logan Aluminum
Karen McFadyen	Pearson	LaKisha Miller	KY Chamber - Director TPM
Jessica Cunningham	KY Stats	Lisa Banner	Beam Suntory
Scott Secamiglio	KY Stats	Jimmy Staton	Southern Star Energy
David Horseman	KY Dept. Of Education-Career & Technical Education	Tara Johnson-Noem	N. KY LWDA Director
Anna Larson	KY Skills U (Adult Ed)	Michael Gritton	KentuckianaWorks LWDA Director
Mike Buchanon	Warren County Judge Executive	Matt Bacon	LWDA rep -S. Central
John Oliva	Hagerman Builders	Diana Jarboe	KCTCS Apprenticeship Coordinator
Mike Smith	TEK Systems	Tara Rascoe	Hopkinsville Workforce Solutions
Tonya Crum	KET	Beth Hargis	CTE Dept of Education
Mike Willand	Mercer County Industrial Authority	Regan Satterwhite	CTE Dept of Education
Michelle DeJohn	Office of Employment & Training	Scott U'Sellis	CTE Dept of Education
Scott Broughton	Advantage KY Alliance	Pam Moore	CTE Dept of Education
Myra Wilson	Director, Cumberlands Workforce Development Area	Natasha Sams	Governor's School for Entrepreneurs
Bo Matthews / Justin Browning	Superintendent - Barren Co. Schools	Dianne Owens	Four Rivers Foundation

August 1, 2021

KWIB Sector Strategies sub-committee

Chair, LaKisha Miller

KWIB Administrative Staff
 – Stefanie Ebbens
 Kingsley, Jacob
 McAndrews, Sara Jagers

LaKisha Miller - Chair	<i>Kentucky Chamber</i>
Kristi Putnam	<i>AppHarvest</i>
Tony Georges	<i>UPS</i>
Kim Menke	<i>Toyota</i>
Kim Humphrey	<i>Alliance Coal</i>
Lisa Banner	<i>Beam Suntory</i>
Todd Schmiedeler	<i>Trilogy</i>
Rick Smith	<i>CPE</i>
Dr. OJ Oleka	<i>AIKCU</i>
Julie Whitis	<i>Ignite Institute</i>
Bo Matthews / Justin Browning	<i>Barren Co Schools</i>
Steven Rudolf	<i>Baptist Health</i>
Tim Ernst	<i>East and West Brook</i>
Brian Lovell	<i>Union County Schools</i>
John Greene	<i>Keeneland</i>
Rob Southard	<i>Southern Gas</i>
Zach Gaubert	<i>Ky Chamber</i>
Kris Williams	<i>KCTCS</i>
Tara Johnson-Noem	<i>NKADD</i>
Jon Soward	<i>South Central Workforce</i>
Scott Secamiglio	<i>KY STATS</i>
Jessica Cunningham	<i>KY STATS</i>
Stefanie Ebbens Kingsley	<i>KWIB Executive Director</i>
Jacob McAndrews	<i>KWIB Coordinator</i>
Sara Jagers	<i>KWIB Coordinator</i>

August 1, 2021

KWIB Career & Technical Education (CTE) / Perkins Leadership sub-committee

Chair, Karla Tipton

KWIB Administrative Staff – Stefanie Ebbens Kingsley, Jacob McAndrews

Karla Tipton	<i>KDE</i>
Scott Pierce	<i>Labor</i>
Rob Southard	<i>Southern Star Energy</i>
Sen. Jimmy Higdon	<i>Senator, 14th District Leg. Research Comm.</i>
Terry Manuel	<i>KDLA</i>
Kevin Smith	<i>Beam Suntory</i>
Tonya Crum	<i>KET</i>
Amy Neal	<i>Early Childhood (ECE)</i>
Jason Luring	<i>Catalent</i>
Meredith Rozanski	<i>Bluegrass Chamber</i>
Beth Davisson	<i>KY Chamber</i>
Karen McFadyen	<i>zyBooks</i>
Stefanie Ebbens Kingsley	<i>KWIB Executive Director</i>
Jacob McAndrews	<i>KWIB Coordinator</i>

August 1, 2021

KWIB Career & Technical Education (CTE) / Certification Continuous Improvement sub-committee

Chair, CTE TEAM – Regan Satterwhite, Dr. Beth Hargis, Scott U’Sellis, Dr. Pamela Moore

KWIB Administrative Staff
– Sara Jagers, Debbie Dennison

David Horseman	<i>Associate Commissioner - CTE and Student Transition</i>
Sara Tracy	<i>KY Chamber</i>
Regina Phillips	<i>Kentuckiana Works - on behalf of) Michael Gritton</i>
Tara Johnson-Noem	<i>LWDA N. Ky</i>
Julie Whitis	<i>Ignite Institute</i>
Scott Pierce	<i>Labor</i>
Suhas Kulkarni	<i>Indus, Inc.</i>
Kim Humphrey	<i>River View Coal</i>
Myra Wilson	<i>Cumberlands LWDA</i>
Misty Edwards	<i>EDWC Proprietary Education</i>
Matt Bacon	<i>LWDA South Central</i>
Brad Clark	<i>CPE</i>
Pam Moore	<i>CTE Career Readiness</i>
Regan Satterwhite	<i>CTE Career Programs and Pathways</i>
Beth Hargis	<i>CTE Technical Schools and Continuous Improvement</i>
Leslie Slaughter	<i>CTE Student Transition</i>
Scott U’Sellis	<i>CTE Career Readiness</i>
Debbie Dennison	<i>KWIB</i>
Sara Jagers	<i>KWIB Coordinator</i>

KWIB Resource Alignment and Funding Committee

Chair, Kim Menke

KWIB Administrative Staff – Stefanie Ebbens Kingsley, Jacob McAndrews

Kim Menke - CHAIR	Toyota	Dr. Bob Jackson	Kentucky Council on Post-Secondary Education Conference of Presidents (representing the Presidents)
Adam Hinton	Hinton Mills	Dr. Jason Glass / David Horseman/Charlie Harman /Robin Kinney	Kentucky Department of Education
Rob Southard	Southern Star Gas	Jon Davidson	Kentucky Housing Corporation
Karen McFadyen	Pearson	Judge Orbrey Gritton	Chief Local Elected Official (representing the LEOs through KACo)
Jessica Cunningham	KY Stats	Michael Gritton / Jeff Whitehead	Local Board Director (representing the 10)
Scott Secamiglio	KY Stats	Tom Underwood	Director of the Kentucky National Federation of Independent Business
Michelle DeJohn	Office of Employment & Training	Dr. Kathy Sheppard-Jones, Director	Executive Director of the Kentucky Human Development Institute
Susan Rieber	Lt. Governor's Office	Amanda Curry	Job Corps Director (representing the 7)
Donietta Hawkey	DOL Vets Training	Cora McNabb	OVR (DOL mandated)
Mary Pat Regan	Education Cabinet - Deputy Secretary	Mayor Robert Blythe	City of Richmond
Lee Nimocks	Council on Postsecondary Education	Representative Bobby McCool	Representative, 97th District
BG Steven Bullard	KY Military Affairs	Sadiqa Reynolds	Louisville Urban League - CEO
Sarah Butler	Kentucky Cabinet of Economic Development	Sharon Price	Community Action
Cali Mills	Kentucky Labor Cabinet	John Greene	HR Director Keeneland
Eric Friedlander	Secretary - Cabinet for Health & Family Services	Sonya Bergman	HR Director Appalachian Healthcare
Stacy Woodrum	Kentucky Justice & Public Safety	Susan Simmons	HR Central Bank
Wendel Followell and Shaun McKiernan	Kentucky Council on Post-Secondary Education	Deputy Commissioner Honor Barker	EWDC/DWI
Sherry Johnson	LWDA Director - Lincoln Trail		

August 1, 2021

KWIB Work Ready Communities Committee

Chair, Lori Ulrich

KWIB Administrative
Staff – Sara Jagers,
Jacob McAndrews

Lori Ulrich - CHAIR	<i>FME Cooperative</i>
Jeremy Faulkner	<i>Area Development - TENCO</i>
Cody Davidson	<i>CPE</i>
Anna Larson	<i>Adult Education</i>
Moochie Hart	<i>Cumberland Family Med Center</i>
Kristina Slattery	<i>Economic Development - CED</i>
LaKisha Miller	<i>KY Chamber</i>
Jon Sowards	<i>LWDA Director - S. Central</i>

August 1, 2021

KY Education and Workforce Collaborative



Governor of Kentucky	<i>Governor Andy Beshear / Secretary J. Michael Brown</i>
Kentucky Education & Workforce Development Cabinet	<i>Lt. Governor/ Secretary Jaqueline Coleman</i>
Kentucky Cabinet of Economic Development	<i>Secretary Larry Hayes</i>
Kentucky Labor Cabinet	<i>Secretary Jamie Link</i>
Kentucky Cabinet for Health & Family Services	<i>Secretary Eric Friedlander</i>
Kentucky Justice & Public Safety	<i>Secretary Kerry Harvey</i>
Kentucky Workforce Innovation Board	<i>Kevin Smith - Chair</i>
Kentucky Council on Post-Secondary Education	<i>Dr. Aaron Thompson- President</i>
Kentucky Council on Post-Secondary Education Conference of Presidents (representing the Presidents)	<i>Dr. Bob Jackson</i>
Kentucky Department of Education	<i>Dr. Jason Glass</i>
Kentucky Commission on Military Affairs	<i>BG Steven Bullard</i>
Kentucky Chamber of Commerce	<i>CEO, Ashli Watts</i>
Kentucky Housing Corporation	<i>Executive Director, Winston Miller</i>
Chief Local Elected Official (representing the LEOs through KACo)	<i>Judge Orbrey Gritton</i>
Local Board Director (representing the 10)	<i>Michael Gritton</i>
State Director of the Kentucky National Federation of Independent Business	<i>Tom Underwood</i>
Executive Director of the Kentucky Human Development Institute	<i>Dr. Kathy Sheppard-Jones, Director</i>
Job Corps Director (representing the 7)	<i>Amanda Curry</i>
Kentucky Community and Technical College System	<i>Dr. Czarapata</i>

August 1, 2021

KWIB / EWDC Collaborative Metrics sub-committee

Chair, (OPEN)

KWIB Administrative Staff – Stefanie Ebbens Kingsley, Jacob McAndrews

Rob Southard	<i>Southern Star Gas</i>
Christopher Snyder	<i>Kentucky Cabinet of Economic Development</i>
Cali Mills	<i>Kentucky Labor Cabinet</i>
Maik Schutze	<i>Kentucky Cabinet for Health & Family Services</i>
Kristin Porter	<i>Kentucky Justice & Public Safety</i>
Stefanie Ebbens-Kingsley	<i>Kentucky Workforce Innovation Board</i>
Alicia Crouch or David Mahan	<i>Kentucky Council on Post-Secondary Education</i>
Kiley Whitaker	<i>Kentucky Department of Education</i>
BG Steven Bullard	<i>Kentucky Commission on Military Affairs</i>
Wendy Smith	<i>Kentucky Housing Corporation</i>
Judge Orbrey Gritton	<i>Chief Local Elected Official (representing the LEOs through KACo)</i>
Sheila Clark	<i>Local Board Director</i>
Tom Underwood	<i>State Director of the Kentucky National Federation of Independent Business</i>
Dr. Tony Lobianco and Jeremy Pope	<i>Executive Director of the Kentucky Human Development Institute</i>
Nicholas Toomey Muhlenberg	<i>Job Corps Director (representing the 7)</i>
Kim Menke	<i>Toyota</i>
Jessica Cunningham	<i>KY Stats</i>
Jon Sowards	<i>Local Board Director - S. Central</i>
Tara Johnson-Noem	<i>Local Board Director -N. KY</i>
Jacob McAndrews	<i>KWIB Coordinator</i>

August 1, 2021

KWIB / EWDC Collaborative Memorandum of Agreement (MOA) sub-committee

Chair, OPEN

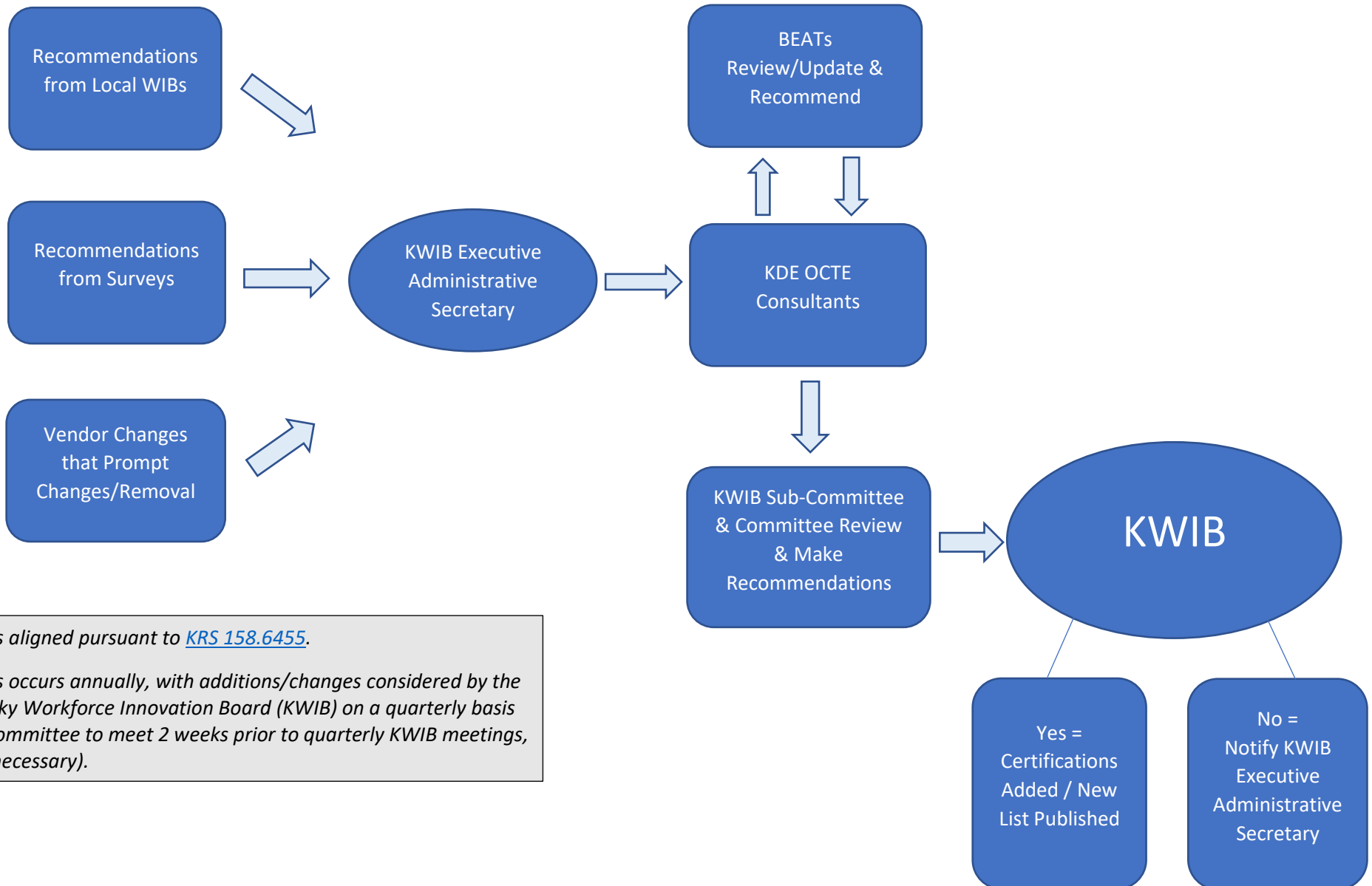
KWIB Administrative Staff – Stefanie Ebbens Kingsley, Jacob McAndrews

OPEN - CHAIR	<i>Kentucky Education & Workforce Development Cabinet</i>
Susan Rieber	<i>Governor Andy Beshear</i>
Kristina Slattery	<i>Kentucky Cabinet of Economic Development</i>
Jamie Link / Vickie Wise	<i>Kentucky Labor Cabinet</i>
Jennifer Harp / Maik Schutze	<i>Kentucky Cabinet for Health & Family Services</i>
Kristin Harrod	<i>Kentucky Justice & Public Safety</i>
Stefanie Ebbens-Kingsley	<i>Kentucky Workforce Innovation Board</i>
Shannon Gilkey / Lee Nimocks	<i>Kentucky Council on Post-Secondary Education</i>
	<i>Kentucky Council on Post-Secondary Education Conference of Presidents (representing the Presidents)</i>
Dr. Bob Jackson	
Dr. Jason Glass / David Horseman	<i>Kentucky Department of Education</i>
BG Steven Bullard	<i>Kentucky Commission on Military Affairs</i>
Ashley Watts / Beth Davisson	<i>Kentucky Chamber of Commerce</i>
Wendy Smith	<i>Kentucky Housing Corporation</i>
	<i>Chief Local Elected Official (representing the LEOs through KACo)</i>
Judge Orbrey Gritton	
Tara Johnson-Noem	<i>LWDA Dir N. Ky</i>
	<i>Kentucky National Federation of Independent Business</i>
Tom Underwood , Director	
Dr. Kathy Sheppard-Jones, Director	<i>Kentucky Human Development Institute</i>
Anna Larson	<i>Adult Education - KY Skills U</i>
Kim Rice, Great Onyx	<i>Job Corps Director (representing the 7)</i>
Staci May	<i>LWDA / ADD Bluegrass</i>
Jacob McAndrews	<i>KWIB Coordinator</i>

August 1, 2021



KENTUCKY'S K-12 INDUSTRY CERTIFICATION APPROVAL PROCESS



Process aligned pursuant to [KRS 158.6455](#).
Process occurs annually, with additions/changes considered by the Kentucky Workforce Innovation Board (KWIB) on a quarterly basis (Sub-Committee to meet 2 weeks prior to quarterly KWIB meetings, when necessary).

COVID-19 and Kentucky's Workforce

August 19, 2021
Dustin Pugel, KyPolicy



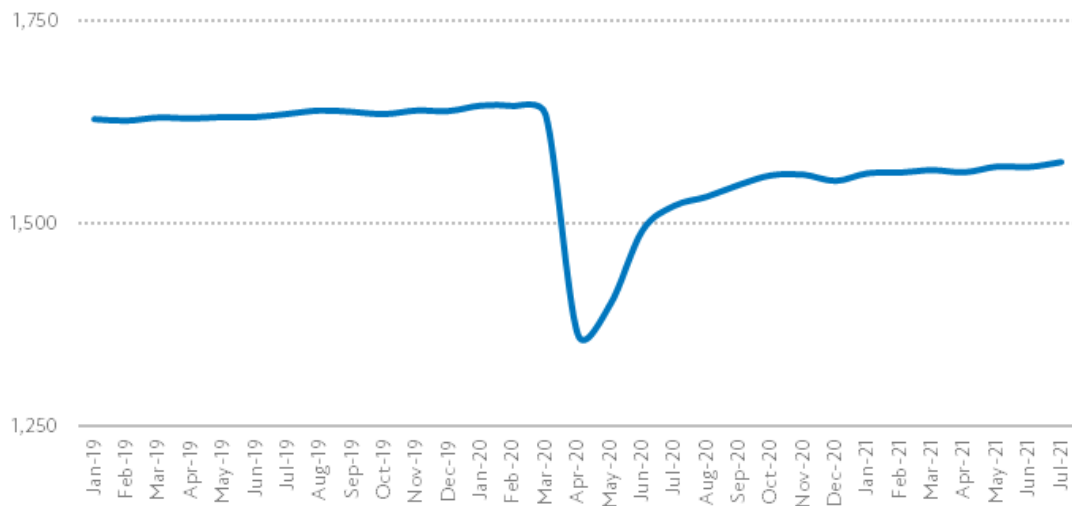
PURSUING SYSTEMIC CHANGE TO MEET THE BASIC NEEDS OF EVERY KENTUCKIAN



Jobs

The COVID Economy in Kentucky

Private sector employment in Kentucky January 2019 - July 2021 (in thousands)



Source: Bureau of Labor Statistics.

Total estimated Kentucky employment May 2021:

1,858,400

Estimated net job loss since February 2020:

-98,600

Percent of jobs recovered since the low-point (April 2020):

66.6%

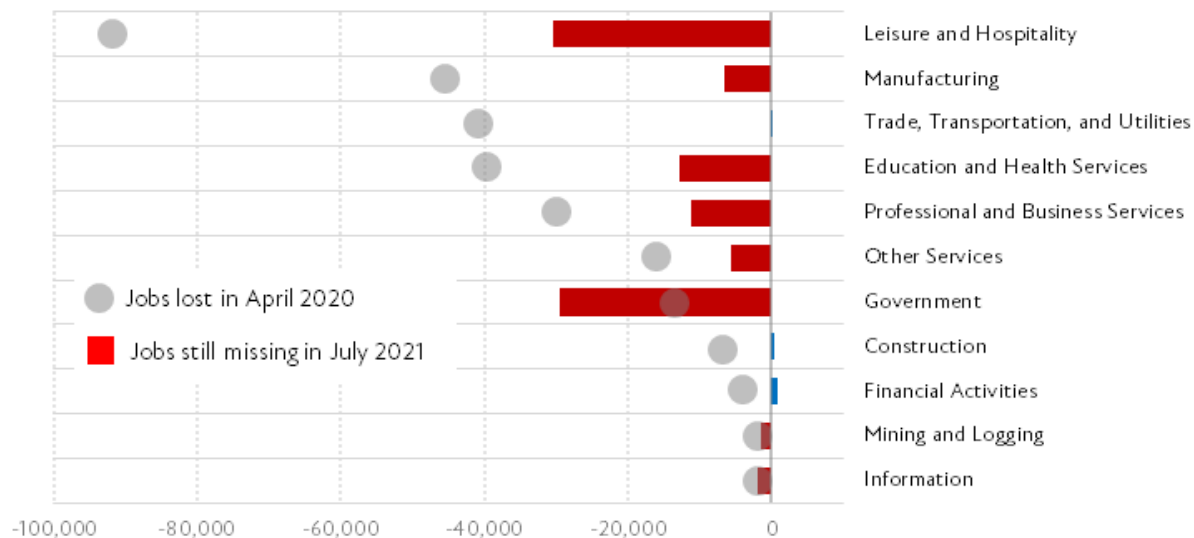
Percent change in Kentucky employment from February 2020:

-5%

Jobs

Employment by Industry in Kentucky

Number of jobs per industry by month in Kentucky compared to the number of jobs in February 2020



Source: KyPolicy analysis of Current Employment Statistics State and Area data for Kentucky.

Accommodation and food services is outpacing the rest:

- Compared to Feb 2020, Leisure and Hospitality recovered the largest number of jobs in May, +57,100.
- Historically low-wage jobs with recent wage growth.

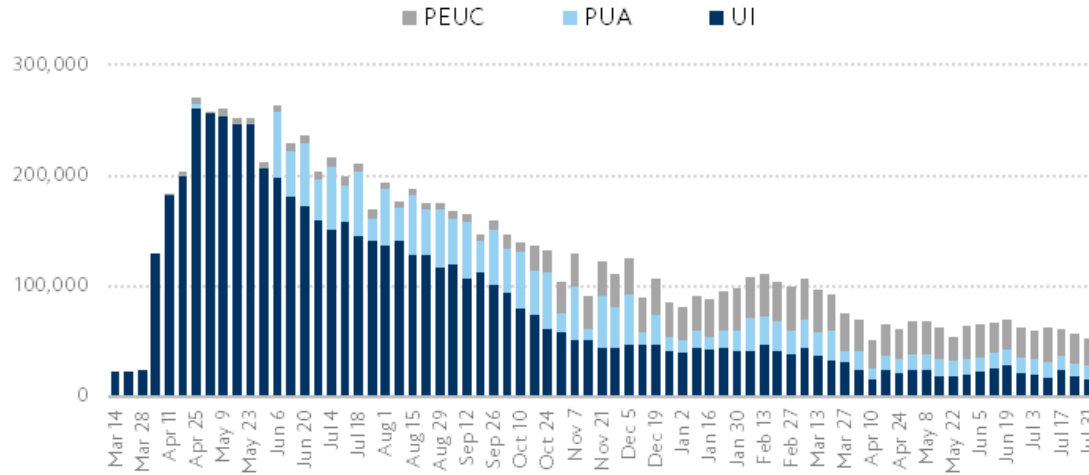
High demand is leading to bottlenecks in hiring and supply:

- Lots of savings from the pandemic when people weren't spending money.
- It takes time to hire back 300,000 people.

Unemployment Insurance

Continued Jobless Claims in Kentucky

Weekly continued claims for regular state unemployment insurance (UI), Pandemic Unemployment Assistance (PUA) and Pandemic Emergency Unemployment Compensation (PEUC)
Mar. 14, 2020 - Jul. 31, 2021



Source: U.S. Department of Labor.

Continued claims for state unemployment insurance for the week ending July 31:

16,351

Continued claims for Pandemic Unemployment Assistance the week ending July 31:

12,307

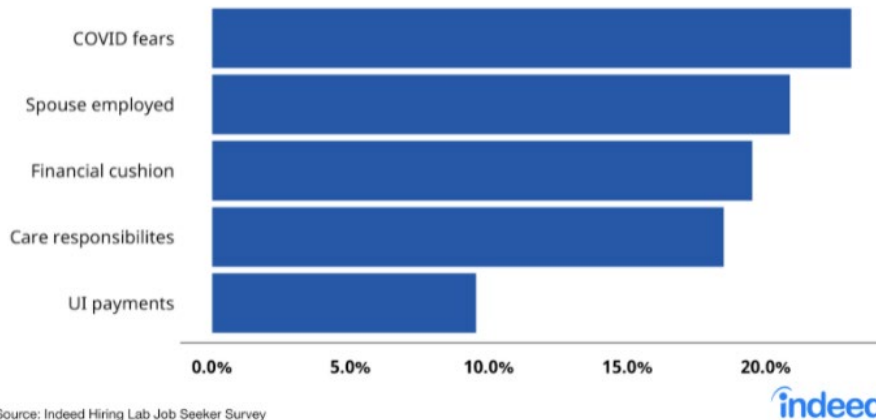
Claims for Pandemic Emergency Unemployment Compensation the week ending July 31:

24,359

Unemployment Insurance

Financial security & COVID-19 behind lack of urgency

Reasons for 'not urgent' job search of the non-urgent unemployed



Source: Indeed Hiring Lab Job Seeker Survey

There are good reasons not to rush back into the labor force:

- Vaccinations and looking for better job opportunities comprise the majority of the reasons for slow returns.
- Fewer than 1 in 5 workers cited UI
- **Multiple empirical studies** show the \$300 isn't a major factor in labor force participation

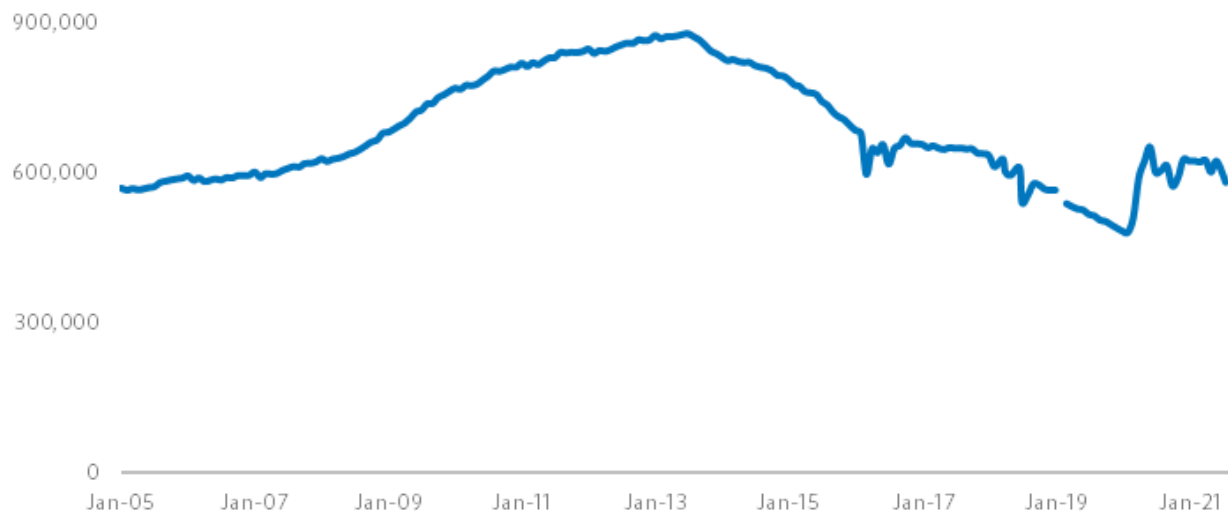
“So far, Bank of America economists wrote last week, the experiences in states ending benefits early ‘suggest more generous benefits did not have a strong negative impact on employment ... Labor constraints could persist beyond the fall’ when the benefits expire nationally.” Reuters, Howard Schneider

<https://www.reuters.com/world/us/us-states-ending-federal-unemployment-benefit-saw-no-clear-job-gains-2021-07-20/>

Supplemental Nutrition Assistance Program (SNAP)

SNAP Participation in Kentucky

Monthly SNAP enrollment in Kentucky January 2005 - July 2021



Source: Data from the Kentucky Cabinet for Health and Family Services.

Total SNAP participation
July 2021:

582,107

Total SNAP spending in
Kentucky since March
2020:

\$2 billion

**SNAP boosts the economy
while feeding Kentucky:**

- \$1 spent through SNAP generates \$1.80 in the broader economy
- Significantly mitigated hunger due to higher benefit levels.

Medicaid

Total Medicaid Enrollment in Kentucky

Medicaid enrollment in Kentucky January 2018 - August 2021



Source: Kentucky Department for Medicaid Services.

**Total Medicaid enrollment
July 2021:**

1,557,091

**Total Medicaid expansion
enrollment July 2021:**

569,286

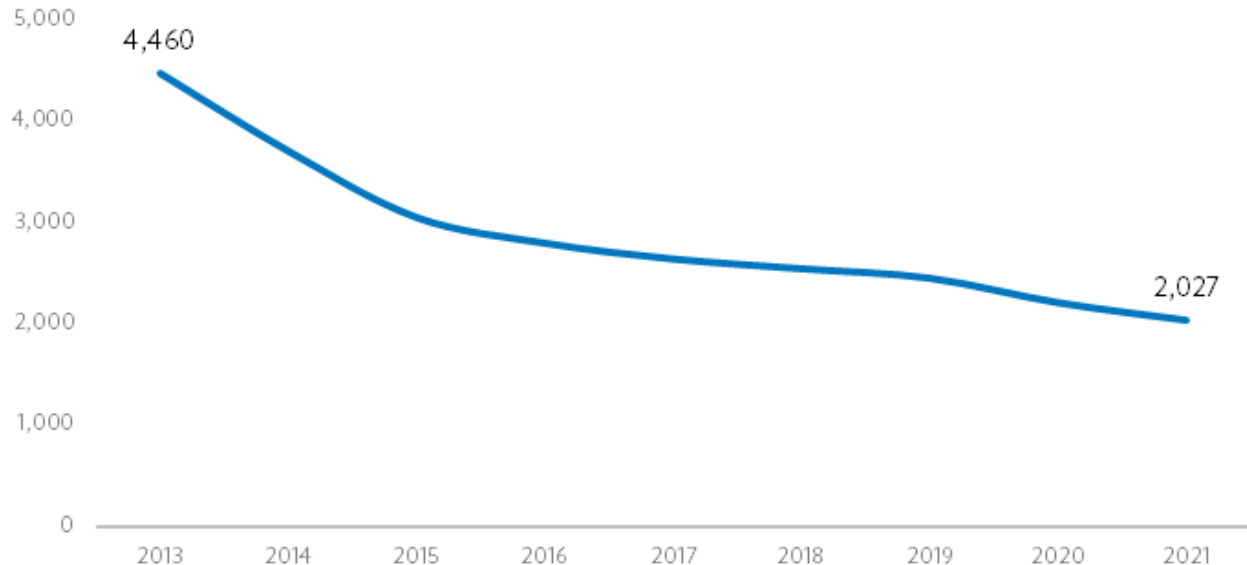
**Medicaid kept families and
rural hospitals afloat:**

- A combination of regular Medicaid enrollment and a special, temporary Medicaid program covered 352,500 more Kentuckians.
- Federal government is paying 6.2% pts more

Child Care Assistance

Child Care Providers Have Been Closing Their Doors

Number of regulated child care providers, state fiscal years 2013 - 2021



Source: Cabinet for Health and Family Services.

Half of Kentuckians live in a child care desert:

- Child care capacity is critically low in over half the counties, affecting half the population.

Historically low wages and public subsidy contribute:

- Recent CCAP reimbursement rates have helped.
- Large ARPA investment will help through 2025.

Housing

Percent of Kentucky renters paying unaffordable rent: **43%**

Kentucky renters not caught up on rent payments: **21%**

Kentucky renters who are not confident they'll make next month's rent: **42%**

Estimated shortage of affordable rental homes in Kentucky: **77,700**

CRSSA Rental Assistance (9/2022): **\$269.9 million**

ARPA Rental Assistance (9/2025): **\$234.9 million**

ARPA Mortgage Assistance (9/2025): **\$85.5 million**

Transportation

Used Vehicles Have Gotten Expensive

Consumer Price Index for used cars and trucks



Source: Federal Reserve Economic Data (FRED).

Used Car Price Index
August 2021:

\$27,729

**Kentuckians are car-reliant
for work:**

- Average one-way commute time in Kentucky is 23.6 minutes.
- 91% of Kentuckians commute to work by car, truck or van.

Connect with Us

Social

@kyvoices4health
@KyEqualJustice
@AANetworkKy
@FeedingKY
@KyPolicy
@HHCKy
@Mhakentucky

Email

emily@kyvoicesforhealth.org
cara@kyvoicesforhealth.org
mtimmerman@mhaky.org
tyler@kyequaljustice.org
kyadvocacy@gmail.com
karena@feedingky.org
jessica@kypolicy.org
dustin@kypolicy.org
abush@hhck.org

Web

www.kyvoicesforhealth.org
www.advocacyaction.net
www.kyequaljustice.org
www.feedingky.org
www.kypolicy.org
www.mhaky.org
www.hhck.org

#ThriveKY

#TeamKentucky

#TogetherKY