



KWIB Work Ready Communities Review Committee Meeting Minutes Friday, December 2, 2022, at 9:30 a.m. EST

Zoom: <https://us05web.zoom.us/j/84426579451?pwd=ejBucnNiS2k4WmRjY1UwMGZxd0RqQT09>
Passcode: 952906

Call to Order

Lori Ulrich, Chairperson called the meeting to order at 9:31 a.m. ET.

Committee Members Present:

| | | | |
|---------------------|-----|--------------------|-----|
| Lori Ulrich - CHAIR | Yes | Kristina Slattery | No |
| Jeremy Faulkner | Yes | Leslie Sizemore | Yes |
| Cody Davidson | No | Jon Sowards | Yes |
| Moochie Hart | Yes | Myra Wilson | Yes |
| Rolando Thacker | Yes | Mark Hohmann | Yes |
| Robert Boone | Yes | Alisher Burikhanov | Yes |
| Dr. Tonika East | Yes | Sara Jagers | Yes |

*Others in attendance: Ethan Schrage, Bill Sandell, Amy Neal, Brenda Hagan, Debbie Dennison, and Lynn Baker.

Welcome and Introductions

Lori Ulrich, Chairperson, welcomed and thanked the committee for attending the special meeting today.

Review of WRC Process and Criteria Discussion

Lori Ulrich, Chairperson, went onto explain the committee wanting to make changes to benefit the communities within the process instead of being stuck to checking boxes from criteria that has been held in the past. During the last meeting, the committee had great thoughts and discussion about revamping the process because the ultimate goal of the certification has gotten lost over the years. Several individuals gave their input about the process, concerns, and agreed that there needs to be another meeting to dig in deeper to make changes to the criteria and overall Work Ready certification process. Another meeting will be scheduled for January 2023. For more information, please watch the recording of the meeting and the meeting packet, which are both available on [KWIB's website](#).

Review of WRC Process and Criteria Discussion

Lori Ulrich, Chairperson, introduced the guest speaker **Ethan Schrage** with KIPDA This strategy represents the five-year Comprehensive Economic Development Strategy (CEDS) for the Kentuckiana Regional Planning and Development Agency (KIPDA) region. KIPDA is a designated Economic Development District (EDD) through the U.S. Economic Development Administration (EDA). As the region's Area Development District (ADD), KIPDA is required to develop a CEDS that identifies regional priorities and economic and community development strategies. KIPDA provides regional planning, review and technical services in the areas of community and economic development, social services and transportation as well as community ride-sharing programs for a nine-county area centered around Metro Louisville; including Bullitt, Henry, Jefferson, Oldham, Shelby, Spencer, and Trimble counties in Kentucky and Clark and Floyd counties in Indiana. KIPDA also coordinates various services for persons 60 years of age and over. For more information, please review the meeting packet available on [KWIB's website](#).

Adjournment

Lori Ulrich, Chairperson adjourned the meeting at 10:36 a.m. ET.



**KWIB Work Ready Communities
Review Committee Meeting Agenda**
Friday, December 2, 2022, at 9:30 a.m. ET

Hybrid Options

Zoom - <https://us06web.zoom.us/j/84426579451?pwd=ejBucnNiS2k4WmRJY1UwMGZxd0RqQT09>

Passcode: 952906

Please contact [Sara Jagers](#) if you plan to attend in-person at 500 Mero Street 4th Floor Frankfort, KY 40601.

CALL TO ORDER

A. WELCOME (Lori Ulrich)

B. REVIEW PROCESS OR METRICS DISCUSSION (Lori Ulrich)

- Review of WRC Criteria, Applications, and WRC Dashboard.

C. KIPDA 2022 CEDS REPORT (Ethan Schrage, KIPDA)

- Kentuckiana Regional Planning & Development Agency (KIPDA), will present the 2022 CEDS Executive Summary.

D. ADJOURN

Approved and Revised Criteria for Work Ready Communities - Approved 11.19.20 and Effective 1.1.21

**Previous criteria is represented by strikethrough (~~xxx~~)*

| Criteria | Work Ready in Progress | Work Ready | | Recertification # 1 (3 years) | Data Source | Links to Info / Data |
|--|---|---|----------------------------------|---|--------------------------------|--|
| | Plan | Criteria | Plan | Criteria | | |
| High School Graduation Rate | Reach 90% or greater in 3 yrs. | 90%+ | Maintain 90%+ | Maintain 90%+ | KYSTATS Work Ready Communities | https://kystats.ky.gov/Reports/Tableau/WRC_2019 |
| Working Age Population Without a High School Diploma / Equivalent (HSE) | Decrease to 15% of population or less without diploma or HSE | <= 15% | Decrease 2% | 13%- with a plan to reach 10%- and maintain | KYSTATS Work Ready Communities | https://kystats.ky.gov/Reports/Tableau/WRC_2019 |
| Some College or Higher Degree | Reach 43% or greater | 43%+ | Increase 2% | 45%+ with a plan to increase 1% every 3 years | KYSTATS Work Ready Communities | https://kystats.ky.gov/Reports/Tableau/WRC_2019 |
| Associates or Higher Degree | Reach 25% or greater Exception: The attainment rate can be modified to a goal of 20% if a majority of the county's 5-year job demand in approved KWIB sectors do not require an associate's degree or higher. Evidence to verify the exception request should be provided in the Workforce Supply & Demand section of the application. | 25%+ Exception: The attainment rate can be modified to a goal of 22% if a majority of the county's 5-year job demand in approved KWIB sectors do not require an associate's degree or higher. Evidence to verify the exception request should be provided in the Workforce Supply & Demand section of the application. | Increase 2% | 27%+ with a plan to increase 1% every 3 years | KYSTATS Work Ready Communities | https://kystats.ky.gov/Reports/Tableau/WRC_2019 |
| High School Work Ethic Seal | Plan / Description to Implement with Potential Number of Enrollments | Number of Enrollments | Increase Number of Enrollments | Plan to continue to Increase | County self-reported | Local Board of Education |
| Kentucky Essential Skills Certificate / Career Readiness Certificates, Other | Plan / Description to Implement | Number of Certs Awarded | Increase Number of Certs Awarded | Plan to Continue to Increase | WIN (Soft Skills Program) | http://cpe.ky.gov/data/index.html https://ncrc.ky.gov/Default.aspx |

Approved and Revised Criteria for Work Ready Communities - Approved 11.19.20 and Effective 1.1.21

**Previous criteria is represented by strikethrough (~~xxx~~)*

| Criteria | Work Ready in Progress | Work Ready | | Recertification # 1 (3 years) | Data Source | Links to Info / Data |
|---|---|--|--|---|---|--|
| | Plan | Criteria | Plan | Criteria | | |
| REVISED CRITERIA - Work-Based Learning (Apprenticeships, co-ops, internships, etc.) | Plan to Review / Evaluate Number of Work Based Learning Opportunities as Related to Demand | Number of Work-Based Learning Opportunities Awarded | Increase Number of Work-Based Learning Opportunities Demand | Continue to Evaluate with a plan to balance supply/demand as much as possible | KYSTATS Kentucky Workforce Dashboard | https://kystats.ky.gov/Reports/Tableau/KWD_2020 |
| Internet Availability and Speed | Within 3 years... In counties with a population of 50,000 plus... must develop a plan to meet 25 Mbps available to 90%+ of population. With a population, less than 50,000... must develop a plan to meet 25 Mbps available to 60%+ of population in counties. | Objectively demonstrate attainment of 25 Mbps availability to 90%+ of population in counties with a population of 50,000 plus and/or 60%+ of population in counties with a population less than 50,000. | Maintain | Maintain | Federal Communications Commission Broadband Access | https://www.fcc.gov/reports-research/maps/connect2health/#l=41.14557,-85.36377&z=6&t=broadband&bbm=filtered_access&dmf=none |
| REVISED CRITERIA - Increased Workforce Participation for and Engagement of Underserved Populations including the following: Disabilities Ex-Offender/Re-Entry Foster Youth Youth and Young Adults Recovery Homeless Unemployed Underemployed Foreign Born/Immigrants Veterans | Must develop a plan to provide employment and engagement opportunities to underserved populations. Plan should address potential barriers such as childcare, health, housing, transportation, and other supportive services serving as incentives or disincentives to work resulting in improvement in the labor participation rate within a 3-year period. | Objectively demonstrate execution / progress of plan to engage underserved populations with input from community-specific partners tied to those individuals and local employers especially as related to addressing potential childcare, health score, housing, transportation, and other barriers that may exist in increasing workforce participation and engagement. | Show how this plan has increased workforce participation rate over the last 3 years. | Increase Workforce Participation Rate | Kynect Resources; Office of Vocational Rehab Services; Cabinet for Health and Family Services; Veterans Organizations; Childcare Providers; Transportation Related Organizations; Refugee and ELL Coordinators; Foster Youth Organizations; Parole and Probation; Reentry Programs; Homeless Organizations or Shelters; Community-Based Organizations assisting Underserved Populations; Etc. | https://kynect.ky.gov/resources/s/?language=en-US https://kcc.ky.gov/Vocational-Rehabilitation/Pages/default.aspx https://chfs.ky.gov/Pages/contact.aspx https://veterans.ky.gov/Pages/default.aspx https://chfs.ky.gov/agencies/dccbs/dcc/Pages/ccap.aspx https://transportation.ky.gov/TransportationDelivery/Pages/Resouces.aspx https://kyrm.org/services/ https://kentucky.kvc.org/ https://corrections.ky.gov/Probation-and-Parole/Pages/default.aspx https://www.kentuckyreentry.org/resources/ https://www.hhck.org/coordinated-entry https://kpca.net/community-development |

2022 Schedule

| 2022 Deadlines/Meetings | Date |
|--|------------------------------------|
| KWIB Meeting | Thursday, March 17, 2022 |
| KYWorks Collaborative | |
| WorkReady Application Deadline | Friday, March 25, 2022 |
| WR Staff will send WRC applications to the WRC Committee for review | Monday, April 4, 2022 |
| WRC Committee will return applications with feedback/questions to WR Staff | Monday, April 11, 2022 |
| Send feedback/questions from the WRC Committee to the counties | Monday, April 18, 2022 |
| Deadline for the counties to send feedback/questions to WR Staff | Monday, April 25, 2022 |
| WR Staff will send county feedback/questions to the committee | Friday, April 29, 2022 |
| WorkReady Communities Review Committee Meeting | Friday, May 6, 2022 |
| KWIB Meeting | Thursday, May 19, 2022 |
| KYWorks Collaborative | |
| WorkReady Application Deadline | Friday, June 24, 2022 |
| WR Staff will send WRC applications to the WRC Committee for review | Tuesday, July 5, 2022 |
| WRC Committee will return applications with feedback/questions to WR Staff | Friday, July 15, 2022 |
| Send feedback/questions from the WRC Committee to the counties | Monday, July 18, 2022 |
| Deadline for the counties to send feedback/questions to WR Staff | Monday, July 25, 2022 |
| WR Staff will send county feedback/questions to the committee | Friday, July 29, 2022 |
| WorkReady Communities Review Committee Meeting | Friday, August 5, 2022 |
| KWIB Meeting | Thursday, August 18, 2022 |
| KYWorks Collaborative | |
| WorkReady Application Deadline | Friday, September 16, 2022 |
| WR Staff will send WRC applications to the WRC Committee for review | Monday, September 26, 2022 |
| WRC Committee will return applications with feedback/questions to WR Staff | Monday, October 3, 2022 |
| Send feedback/questions from the WRC Committee to the counties | Monday, October 10, 2022 |
| Deadline for the counties to send feedback/questions to WR Staff | Monday, October 17, 2022 |
| WR Staff will send county feedback/questions to the committee | Friday, October 21, 2022 |
| WorkReady Communities Review Committee Meeting | Friday, October 28, 2022 |
| KWIB Meeting | Thursday, November 10, 2022 |
| KYWorks Collaborative | |



Suggested Partners / Representatives

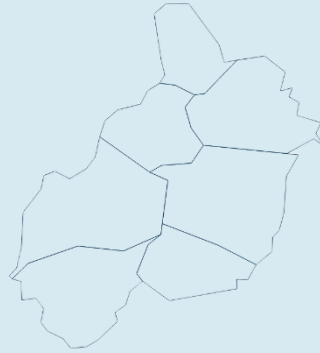
- Employers
- Local Workforce Board
- Kentucky Career Center
- Economic Development
- Chamber(s)
- Vocational Rehabilitation
- Early Childhood Education / Care
- Transitioning Military / Veterans
- Cabinet for Health and Family Services
- Foster Care
- Libraries
- Kentucky Skills U – Adult Education
- Secondary Education (Superintendent)
- Community College
- 4 Year Educational Institutions
- Homeless
- Foreign Born
- Community Based Organizations
- Goodwill, United Way, Salvation Army, etc.
- Other as Designated Important

Approved and Revised Criteria for Work Ready Communities - Approved 11.19.20 and Effective 1.1.21

**Previous criteria is represented by strikethrough (~~xxx~~)*

| Criteria | Work Ready in Progress | Work Ready | | Recertification # 1 (3 years) | Data Source | Links to Info / Data |
|------------------------------------|---|--|--|---|-------------|--|
| | Plan | Criteria | Plan | Criteria | | |
| Workforce Supply vs. Demand | <p>Work with local workforce board to review and analyze 5-year occupational demand by industry in order to have a system, which supplies industry with the talent pipeline needed. Identify key sectors and occupations, and explain how the community is producing a workforce ready to fill those positions.</p> <p>Provide support letters from local workforce board, chamber of commerce, economic development, individual employers, other demand industries, etc.</p> | <p>Work with local workforce board to review and analyze 5-year occupational industry demand to create a system which supplies industry with the talent pipeline needed. Identify key sectors and occupations, and explain how the community is producing a workforce ready to fill those positions.</p> <p>Provide support letters from local workforce board, chamber of commerce, economic development, individual employers, other demand industries, etc.</p> | <p>Continue to review, analyze and plan.</p> | <p>Continue to review, analyze and plan to balance supply / demand as much as possible.</p> | KYSTATS | <p>https://kystats.ky.gov/Reports/Tableau/KWD_2020</p> <p>https://kystats.ky.gov/Reports/Tableau/B2W_2020</p> <p>https://kystats.ky.gov/Reports/Tableau/2020_ICEE</p> <p>https://kystats.ky.gov/Reports/Tableau/ECP_2020</p> <p>https://kystats.ky.gov/Reports/Tableau/KCPR_2020</p> |

*The data for some categories is collected for different age populations, see below:
 - Some College or Higher Degree data is collected for ages 18-64
 - Working Age Population Without a High School Diploma / Equivalent (HSE) data is collected for ages 18-64
 - Associates or Higher Degree data is collected for ages 25-64

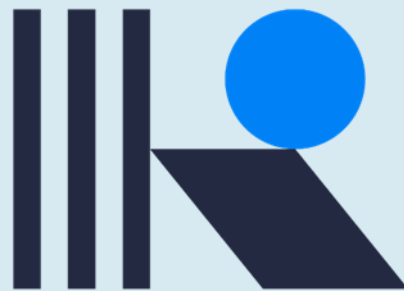


COMPREHENSIVE ECONOMIC DEVELOPMENT STRATEGY

Executive Summary

2023-2027

Bullitt, Henry, Jefferson, Oldham, Shelby, Spencer, and Trimble Counties



K I P D A

OVERVIEW

This strategy represents the five-year Comprehensive Economic Development Strategy (CEDS) for the Kentuckiana Regional Planning & Development Agency (KIPDA) region. KIPDA is a designated Economic Development District (EDD) through the U.S. Economic Development Administration (EDA). As the region's Area Development District (ADD), KIPDA is required to develop a CEDS that identifies regional priorities and economic and community development strategies.



KIPDA provides regional planning, review and technical services in the areas of community and economic development, social services and transportation as well as community ride-sharing programs for a nine-county area centered around Metro Louisville; including Bullitt, Henry, Jefferson, Oldham, Shelby, Spencer, and Trimble counties in Kentucky and Clark and Floyd counties in Indiana. KIPDA also coordinates various services for persons 60 years of age and over.

NEW FEATURES

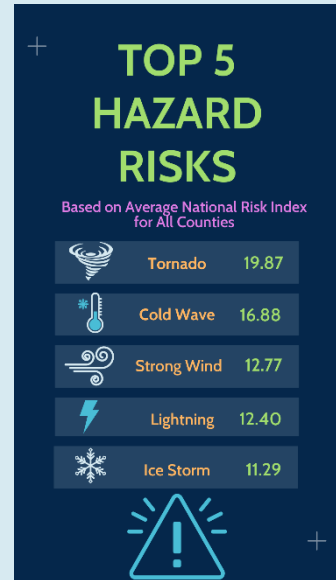
The [Physical Resilience](#) section has been revamped with new data from the FEMA National Risk Index. This index measures the physical risks for each county. It uses data on 18 different natural hazards to create the index. In addition, it calculates its score using expected annual loss due to natural hazards, social vulnerability, and community resilience. Altogether, it creates a reliable metric to look at the potential physical risks of a region.

All counties in the KIPDA region, except for Jefferson and Shelby, received a “very low”

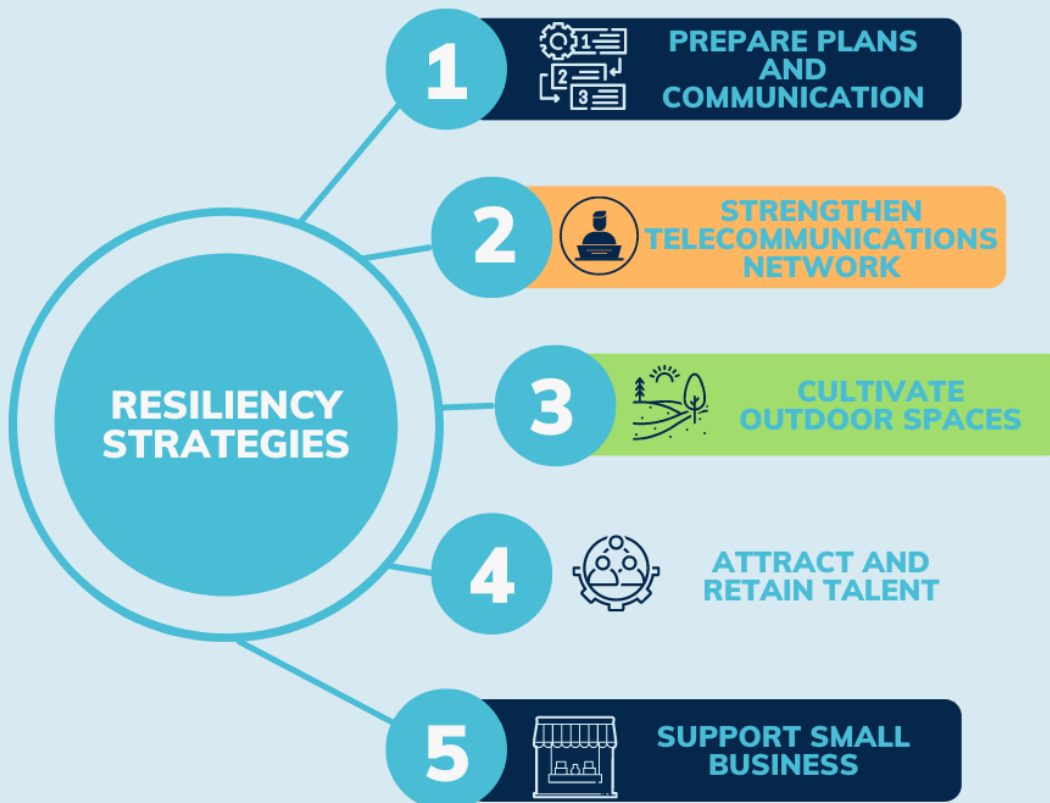


risk index. Jefferson County’s risk was designated as “relatively high”, and Shelby County was designated as “relatively low”. The top five hazard risks include tornado, cold wave, strong winds, lightning, and ice storms. See the full FEMA National Risk Index report for the region here: [National Risk Index Report](#).

KIPDA is in the process of developing a Pandemic Recovery and Resiliency Plan which investigates the effects of the pandemic and the economic effects on the region. The plan outlines the effects, summarizes recovery resources, lists recovery efforts that have been made, develops resiliency profiles for each county, and recommends goals and strategies to increase resiliency in the region and prepare for the future.



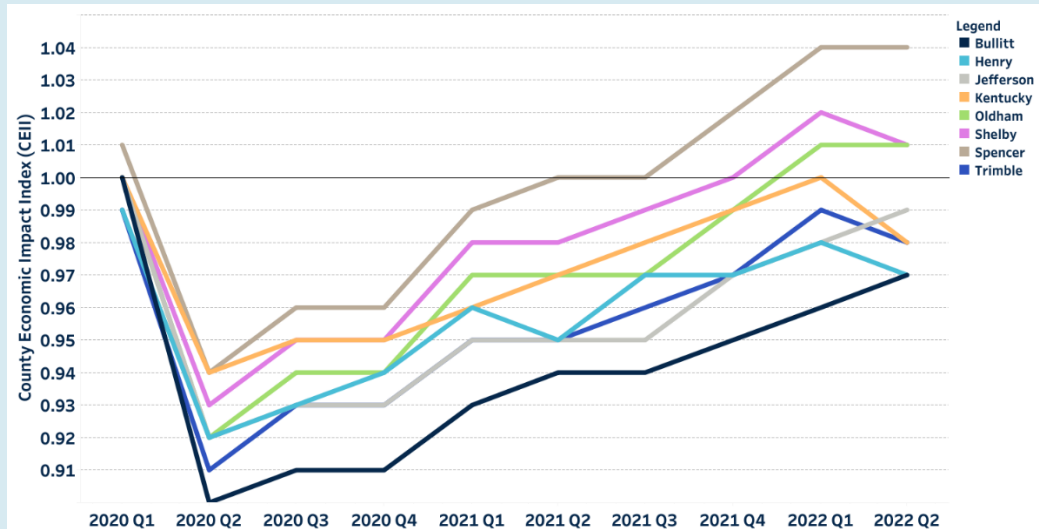
Below are those newly recommended resiliency strategies that are reflected in the [Pandemic Resiliency](#) section:



The Pandemic Resiliency section of the CEDS also includes data from the Argonne National Laboratory which develops a County Economic Impact Index (CEII). This tracks

the impact on local economies during the COVID-19 pandemic. This index can also show economic recovery over time. A CEII value of 1 indicates the county's economy as it was in January 2020.

Below is the CEII values for the state and each county:



S.W.O.T. ANALYSIS & ACTION PLAN

KIPDA conducted an analysis of the region's strengths, weaknesses, opportunities, and threats, known as a SWOT analysis. The analysis includes the feedback from KIPDA's various regional committees, elected officials, and other stakeholders from the community on what they identified to be areas of priority for each of the categories. The SWOT had 100 respondents from all seven counties.

| | | | |
|--|---|--|---|
| <p>STRENGTHS</p> <ul style="list-style-type: none"> PARKS AND RECREATION SCHOOLS BEAUTY/NATURAL LANDSCAPE GEOGRAPHICAL LOCATION PUBLIC SERVICES MULTIMODAL LOGISTICS INFRASTRUCTURE TOURISM COST OF LIVING | <p>WEAKNESSES</p> <ul style="list-style-type: none"> AFFORDABLE HOUSING PUBLIC TRANSPORTATION LACK OF SOCIAL SERVICES BROADBAND LACK OF SKILLED WORKFORCE FOOD DESERTS CHILDCARE AGING INFRASTRUCTURE LIVING WAGE EMPLOYMENT RACIAL & ECONOMIC SEGREGATION TRAFFIC CONGESTION | <p>OPPORTUNITIES</p> <ul style="list-style-type: none"> TOURISM WORKFORCE DEVELOPMENT AGRICULTURE LOCAL FOOD ECONOMY INFRASTRUCTURE INVESTMENT MULTI-MODAL TRANSPORTATION LAND READY FOR DEVELOPMENT BUSINESS RECRUITMENT AFFORDABLE HOUSING | <p>THREATS</p> <ul style="list-style-type: none"> LACK OF AFFORDABLE HOUSING AGING INFRASTRUCTURE AGING POPULATION SUSTAINING GROWTH LACK OF FUNDING/REVENUE LACK OF SKILLED WORKFORCE VIOLENCE/PERCEIVED VIOLENCE RACIAL TENSIONS/INJUSTICE INCOME DISPARITIES POVERTY POLITICAL CONSTRAINTS |
|--|---|--|---|

The Kentuckiana Regional Planning Agency CEDS plan was created to address our region's economic development needs and priorities and identify a strategic action plan to reach our desired goals. The plan was a collaborative effort between KIPDA's Community & Economic Development, Transportation, and Social Services departments, in conjunction with the results of the S.W.O.T. analysis and regional survey results. The Action Plan allows KIPDA counties to strategically move forward while simultaneously preparing for the future of economic development in our region.

Below are the goals identified in the Action Plan:

GOAL 1
Create a sustainable regional economic development strategy that encourages urban and rural collaboration, diversified growth, and entrepreneurial support.

GOAL 2
Foster a skilled and flexible workforce that successfully meets the needs of existing and emerging industries and technologies.

GOAL 3
Implement a sustainable and multi-modal transportation system that improves connections efficiently and effectively, while improving safety and accessibility for all users in the region.

GOAL 4
Maintain and strengthen current regional water and wastewater planning, including flow capacity, needed to encourage economic development opportunities.

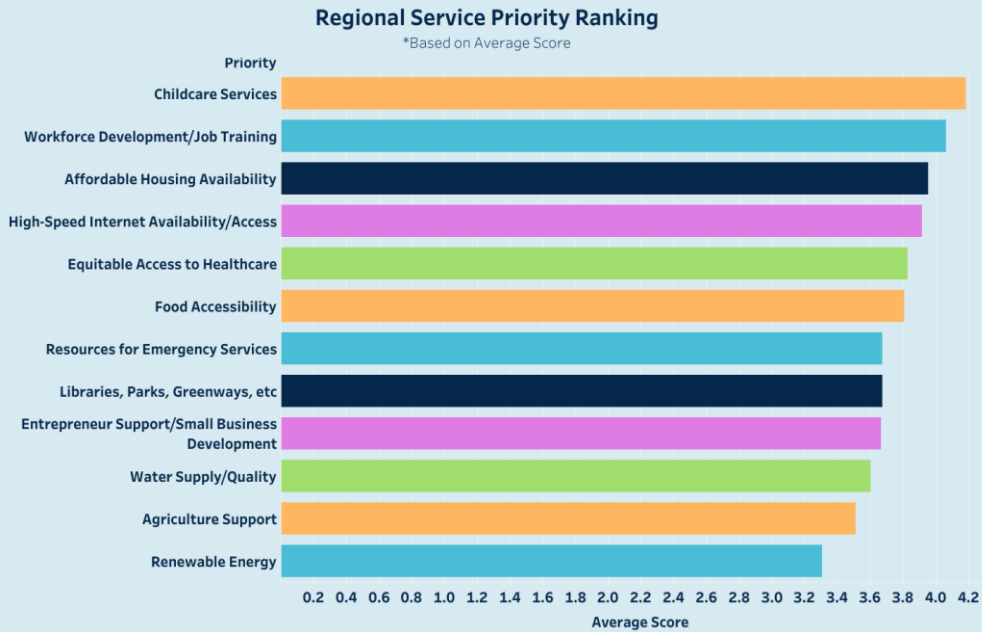
GOAL 5
Encourage and support the development of a region with a diversified economy where all residents can live healthy and productive lives, regardless of age or ability.

SURVEY RESULTS

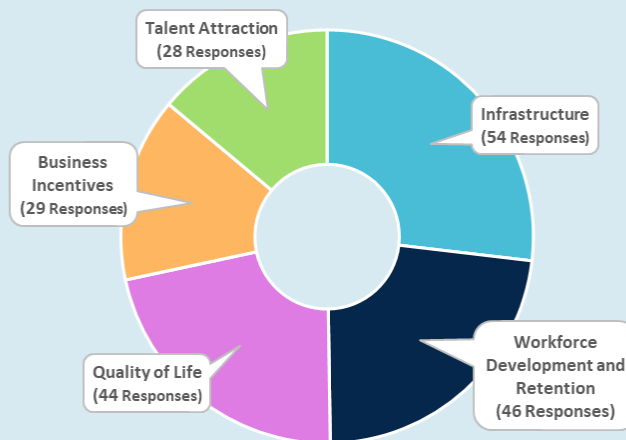
The CEDS survey respondents were asked how the region could better plan for economic resilience; responses included diversification of the economy, growing local small/mid-sized businesses, regional economic resiliency planning, and encouraging full community involvement. Additionally, strategic target sectors were identified where investments need to be made to strengthen local business and create a diverse economy. **Targeted sectors include:**

| | | |
|--|--|--|
| <p>Tourism</p> <ul style="list-style-type: none"> Bourbon Agritourism Arts, Culture, & Entertainment Lodging Adventure Tourism Retail  | <p>Agricultural</p> <ul style="list-style-type: none"> Agribusiness Sustainable Agriculture Equine Industry Grocery Stores Locally Sourced Food  | <p>Education</p> <ul style="list-style-type: none"> Workforce Development Job Training College Satellite Campuses Childcare Services  |
| <p>Professional, Scientific, & Technical</p> <ul style="list-style-type: none"> STEM Information Technology Clean/Renewable Energy Research & Development Professional Services Aviation High-Tech Startups  | <p>Logistics</p> <ul style="list-style-type: none"> Distribution Communications Multi-Modal Freight  | <p>Manufacturing</p> <ul style="list-style-type: none"> Breweries & Distilleries Light/Clean Industry Industrial Automotive Advanced Recycling  |
| <p>Healthcare</p> <ul style="list-style-type: none"> Medical Professionals Medical Research and Technology Long-Term Care  | | |

The table below communicates respondents' responses when asked to rate the top Regional Service Priorities in their community. The priorities are as follows: Childcare, Workforce Development/Job Training, Affordable Housing, High-Speed Internet, Equitable Access to Healthcare, Food Accessibility, Entrepreneur Support/Small Business Development, Public Services, Emergency Services Resources, Water Supply/Quality, Renewable Energy, Agriculture Supports, and Others.



Respondents were asked to choose the top strategies that would benefit their community's economic development efforts. The top strategies were Infrastructure (Utilities, Transportation Needs, Technology, etc.), Workforce Development and Retention, Quality of Life (Parks and Recreation, Elimination of Nuisance Properties, Better Housing, etc.), Business Incentives, and Talent Attraction.



Respondents were asked what capital improvements should be prioritized. Priorities were ranked numerically from 1 to 5 (1 = Little to No Priority, 5 = High Priority). Broadband Accessibility and Road Improvements were ranked as high priorities. Public Transit, Water and Sewer, Parks and Recreation, Community Facilities, Downtown Revitalization, Public Housing, Clean Energy Alternatives, Natural Gas Pipelines, Bike and Pedestrian Facilities, and Parking were moderate priorities.



VISIT NOW!

To view the full 2023-2027 CEDS five-year strategy and explore all demographic data regarding the KIPDA region, visit www.kipdaceds.org.

To learn more about KIPDA and our work with our community and local partners visit our website at www.kipda.org. To stay up to date on what is happening in our region follow us on social media accounts below and sign up for newsletter at the bottom of the KIPDA homepage!

