



EVERYBODY COUNTS

Overview Presentation

TEAM 
KENTUCKY

A future way beyond basic.

Everybody Counts is a dynamic initiative from Team Kentucky that provides a clear pathway to success for qualifying seniors graduating from participating Kentucky school districts. The initiative benefits graduating seniors as well as businesses, local communities and Kentucky's economy.

With Everybody Counts, everybody wins!





Every young adult in Kentucky counts. We want to do everything we can to ensure each one of these graduating seniors is on a path for success – a path that can change in the future if their goals change. We are at a unique moment in time. There's never been more opportunity to get higher education and training, and for the first time in my lifetime we have more jobs than people to fill them. We want to give these students a chance to select that path they want to be on before they graduate.



Kentucky Governor
Andy Beshear

TEAM 
KENTUCKY®



CAREER COACH MODEL

An Everybody Counts Career Coach guides, mentors, and motivates participating students through activities to build a career and/or education pathway beyond high school.

- SELF ASSESSMENT
- GOAL SETTING
- ACTION PLANNING
- CAREER AND EDUCATION EXPLORATION
- SKILL DEVELOPMENT
- WORK-BASED LEARNING
- NAVIGATING CHALLENGES

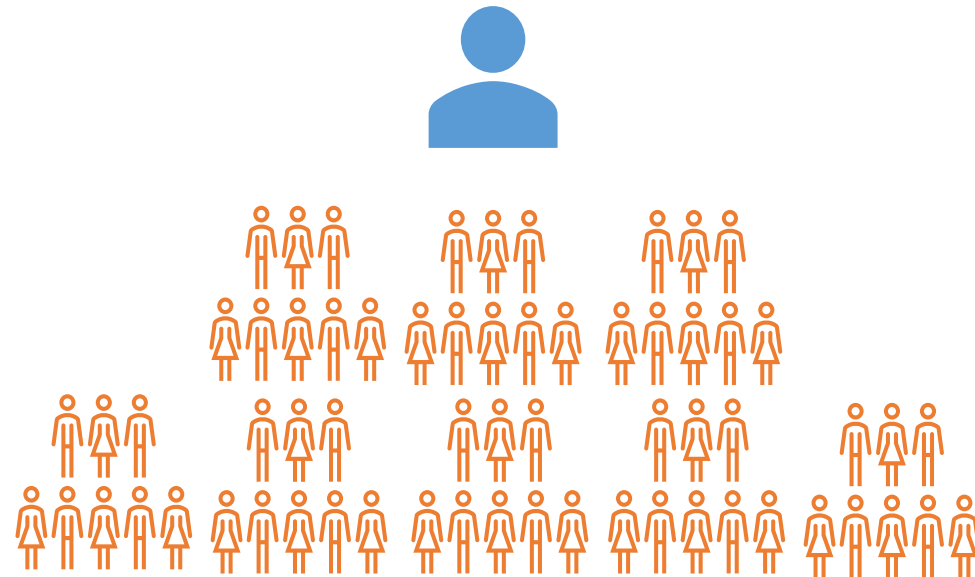
EVERYBODY COUNTS

IMPACT

Everybody Counts Career Coaches have the potential to reach high school seniors across 25 high schools in five public school districts in Kentucky.

For the 2024-2025 school year, Everybody Counts will deploy 25 Career Coaches to supported high schools in the following counties:

- Fayette County
- Franklin County
- Jefferson County
- Scott County
- Shelby County



One Everybody Counts Career Coach impacted approx. 200 seniors during the 2023-2024 school Year

New Services

Everybody Counts' partnership with the Office of Vocational Rehabilitation (OVR) enhances services to deliver **Pre-Employment Transition Services (Pre-ETS)**.

- Job Exploration Counseling
- Work-based Learning Experiences
- Counseling on Postsecondary Education Opportunities
- Workplace Readiness Training
- Instruction in Self-Advocacy

Pre-ETS represents the earliest set of services available for students with disabilities. Services are short-term in nature and are designed to help students identify career interests.

CAREER COACH RESEARCH



“Providing high-quality college and career exploration and counseling options, such as reviewing options after high school with the student, offering direct information about college and careers, and extending exposure to college and career environments are likely to help students navigate transitions after high school.” ⁽¹⁾

CAREER COACH RESEARCH

“For students who are in low-income communities where few adults have completed college and for public schools are badly under-resourced, students may have no one to turn to for information or support.” (2)



OTHER STATE MODELS

Alabama Career Coach Initiative

Alabama has implemented a statewide initiative to provide career coaching in high schools, focusing on guiding students toward various career pathways.

Indiana Career Coaching and Navigation System

The Indiana Commission for Higher Education oversees this program, which received \$25 million in funding to enhance career coaching across the state.

AccelerateMS Career Coach Program

Mississippi's AccelerateMS program has significantly expanded, demonstrating how career coaching facilitates connections between students and the workforce. The program reports thousands of job applications and employer interactions, with positive feedback from businesses about student preparedness and engagement with local industries.

Pathful for KENTUCKY



sponsored by

TEAM KENTUCKY



Discover Your Future Now

What life do I want?

What skills do I need?

How do I create the future I want?



Check Out the Latest Content on Pathful This Month



Download Your Monthly Calendar



Log in

kentucky.pathful.com



⇒ transfr

A New Approach To Workforce Development



1. Explore

A student explores career possibilities with short accessible sessions in Career Exploration.



2. Learn

A career is selected and training begins, this can include dual enrollment credits and more.



3. Train

Students develop their expertise at a two-year College or High School training program.



4. Work

Skilled workers enter well-paying jobs in high-growth industries. Job-ready on day one.



Ready For Industry

Powered by eDynamic Learning

Ready for Industry helps prospective workers understand what the most in-demand industries are like – the careers, businesses, and processes that make up the industry.

Additionally, RFI helps the prospective worker learn about the essential processes in each industry. After these courses, the new employee is more ready to be productive on the first day of work!

RFI provides courses, 15-20 hours each, for five of the highest-demand industries:

- Manufacturing
- Healthcare
- Information Technology
- Logistics
- Construction

STUDENT BENEFITS

- Personalized career coaching
- Exposure to Kentucky industries
- Connections to businesses
- Work-based learning opportunities
- Connections to education & training
- Continued support one-year post-graduation



“Everybody Counts has been a big help to me because I can’t go to my family for help. I am the first to attend college. At first, I felt dumb that I didn’t know anything, but my Everybody Counts Coach has helped me step by step.”

“My Everybody Counts Coach has given me confidence and kept me on my toes to focus on my work, turn in assignments, and improve my grades. I enjoy talking to my Everybody Counts Coach, I am stressed with all my schoolwork, and she listens to me.”

- Franklin County Senior, Class of 2024

KDE - 2021

Transition to Adult Life Data						
DATA	COLLEGE	TECHNICAL TRAINING	MILITARY	WORKING	WORK AND SCHOOL	OTHER
STATE	18.5%	*	2.1%	28%	35.6%	15%
FAYETTE	22.8%	*	1.1%	22.6%	37.8%	13.8%
FRANKLIN	24.3%	*	2.1%	22.1%	35.2%	13.8%
JEFFERSON	14%	*	0.1%	37%	33.4%	15.3%
SCOTT	16.8%	*	1%	24.7%	47.1%	10.4%
SHELBY	11.9%	*	4.1%	35.2%	33.6%	15.2%

*** Data not reported**

WORKFORCE BENEFITS

- Access to a pool of motivated candidates
- Opportunities to directly engage students
- Work-based learning promotion
- Career events and activities during school year
- Enhanced skills and workplace readiness
- Connection to business before graduation
- Career Coach advertisement of business & job openings

DISTRICT BENEFITS

- Enhanced student engagement
- Direct career coaching services for students
- Creation of in-school skill development activities
- Strengthen business partnerships
- Increase work-based learning opportunities
- Improve college-going student retention
- Insights into post-graduation student trends



“Everybody Counts is the exact program that schools and students need. Our Everybody Counts Coach came with obvious training as to how to directly impact students. She joined our staff and immediately became a part of the fabric at SCHS. She got to know the students in their environment and quickly began working with them to reach their own goals.

One thing that makes this program unique is that it truly focuses on the goals of individual students. Everybody Counts focuses on both aspects of a student's education- the overall requirements and the individuals themselves. Although I was hesitant for "another program" to be placed in our schools, this one has proven to be HIGHLY effective and relevant.”

- Elizabeth Gabehart, Scott County High School Principal

TEAM KENTUCKY[®]

EDUCATION AND
LABOR CABINET

Office of Educational Programs
Everybody Counts



EverybodyCounts@ky.gov



EverybodyCounts.ky.gov

REFERENCES:

1. Xing, X., Huerta, M., & Garza, T. (2019). College and Career Preparation Activities and Their Influence on Post-High School Education and Work Attainment. *Journal of Career and Technical Education*, 34(1), 8-28. Retrieved from <https://eric.ed.gov/?q=College+and+Career+preparation+activities+and+their+influence&id=EJ1253684>
2. Rosenbaum, J., Cepa, K., & Rosenbaum, J. (2013). Beyond the one-size-fits-all college degree: Alternative pathways to desirable careers. *Contexts*, 12(1), 48-52. Retrieved from <https://contexts.org/articles/beyond-the-one-size-fits-all-college-degree/>



EVERYBODY COUNTS

TEAM 
KENTUCKY
