



**MEETING AGENDA**  
**September 10 @ 1:30 pm**

**Zoom**

[Join Meeting](#)

Password: 951747

Phone one-tap: US: [+16465189805,,92303752079#,,,,,951747](#) or [+13126266799,,92303752079#,,,,,951747](#)

Dial: US: +1 646 518 9805 or +1 312 626 6799 or +1 720 928 9299 or +1 213 338 8477

Meeting ID: 923 0375 2079

Password: 951747

- 
- **Call Meeting to Order**
  - **Current Posture of Where We Are**
    - [New EO for KY Workforce and Education Collaborative](#)
  - [Current Workforce Statistics](#)
  - [Benefit Cliff Analysis/Self-Sustainability](#)
    - Training and Communications Plan (Sub Committee)
    - Next Steps
  - [Opportunity Youth Populations](#)
    - Youth Sub Committee
    - Next Steps
  - **Next Steps / Meeting**



Workforce Participation and Sustainability  
Committee Meeting  
9/10/2020  
1:30pm

## DRAFT MINUTES

**MEMBERS PRESENT:** Amy Luttrell, Jon Davidson, Jim Mahony, Danny Davis, Shannon Gilkey, David Horseman, Kris Stevens, Becky Cabe, Kathy Sheppard-Jones, Jeff White, Jennifer Harp, Troy Fitzhugh, Gene Childress, Doug Jones, Jacqueline Korengel, and Dallas Hurley.

**CABINET STAFF PRESENT:** Melissa Aguilar, Heather Seward

New Executive Order  
Current Workforce Statistics  
Benefit Cliff Calculator

### Collaborative/EO Updates

- 19 Members, added KCTCS
- Work has continued
  - Draft MOA
  - Preliminary funding map
- Dashboard updates
  - Discussion on workforce participation rates
  - 9k jobs increase
  - Working on a finalized list on metrics that better represent than just dashboard
    - Is there a best practice state? Define a “like” state (those ranked similarly to KY. COVID exploration piece for UI
    - Plan will increase high than neighboring state
- Benefit Cliff
  - Kentuckiana Works has been using and present to stakeholder groups
    - 4-6 month for updates, policy changes needed related
    - Training and communications
    - If we moved from yearly update to monthly could include the other supports. UI is not eligible to all not included. Would need to be discussed in depth
    - How can the committee help with communication and training?
      - Needs specific on who would be doing this to look at bandwidth
      - Task force to look at need
- Kentucky United Way
  - Bill Farmer new person to get engaged—Set up call.
- Opportunity Youth—Harmony Little KCTCS



- Dashboard
  - Updates needed
  - Unaccompanied youth
  - Dissection/analysis
    - Pick sub-youth populations we can use
    - Issues with getting juvenile justice info on those under 18. Justice is involved
    - Chose sub-pop with lots of info and one with less info and pilot both
- Next Meeting: 1<sup>st</sup> November
- Youth Sub-committee Comm/Training Meeting: 1<sup>st</sup> of October
  - Poll for dates for each committee
  - Task Force: Heidi, Amy, Jessica, Jon, Kevin Middleton, Madison Webb, Anna Larson
  - Check with Heidi and Amy on availability, and who wants to lead
  - Add Foster Youth (Melissa Goins, Mary Ann Jennings)
  - Add ECE (Amy Neal)
- Youth Committee Meeting last held 2019; invite who was on the committee originally and invite those people

DRAFT

# Using Integrated Data & Outcomes-Based Funding Approaches to Increase Success for Underrepresented Youth & Young Adults



# Grant Goals



---

Use high-quality integrated data to close equity gaps in education, employment and training outcomes for underrepresented young people **(14-24 years old)**

Target Metrics For Employment, Education & Training

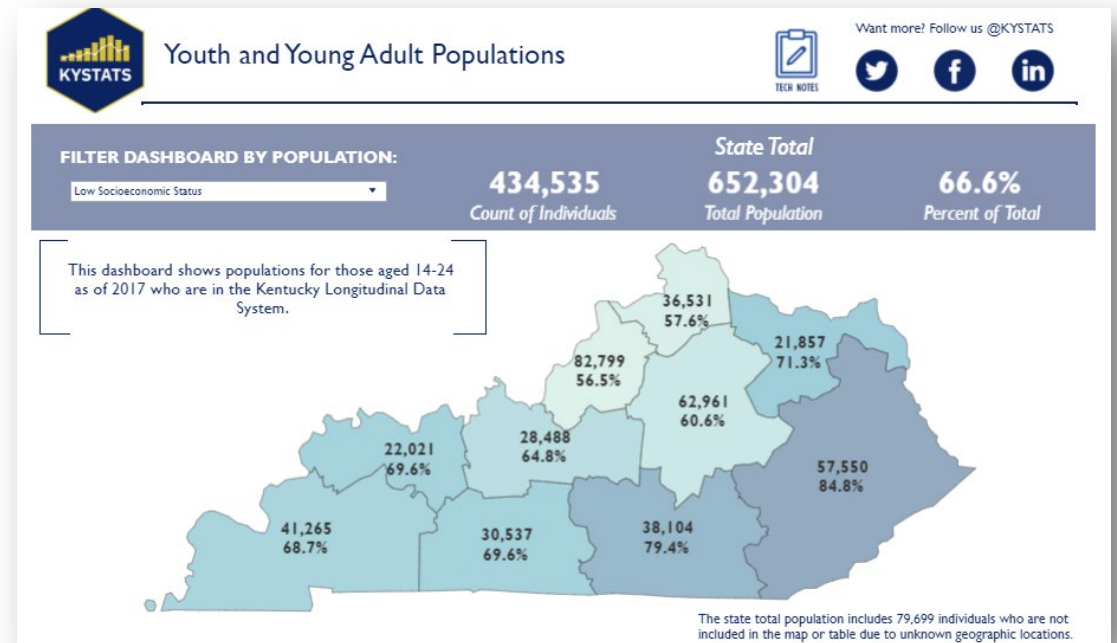
- Employment placement
- Employment retention
- Wage earned and/or progression
- Program completion/certification

***Aligns with KWIB goals of increasing education attainment and completion as well as and increasing workforce participation***

# Dashboard

KY STATS developed a first of a kind [dashboard](#) leveraging the Kentucky Longitudinal Data System to show a demographic breakdown of the overall 14-24-year population in Kentucky for 2017 for these sub-populations:

- Homeless
- Limited English Proficiency
- Low Socioeconomic Status
- Migrant
- Special Education
- Unaccompanied Youth



# Proposal

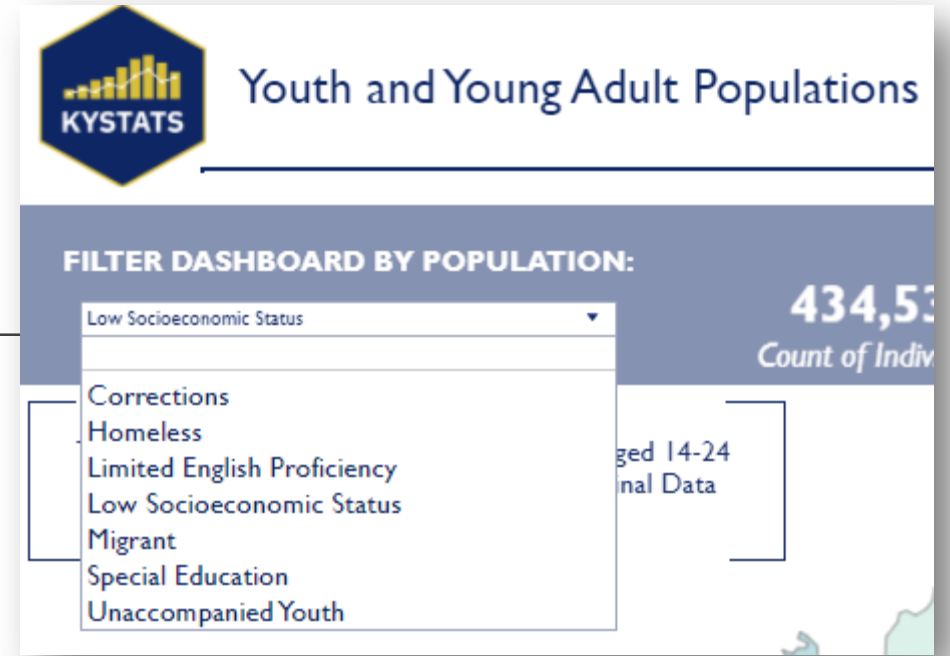
---

- Leverage existing KYSTATS data for dissection and analyzation:
  - Analyze outcomes for specific youth sub populations
  - Set metrics to increase workforce matriculation for a particular youth sub populations
  - Allow us to determine outcomes for sub-populations and determine ROI



# Next Steps

- Determine sub populations
  - Do we have programs directed to sub populations?
  - Do we have data for sub populations?
  - Do we have metrics established for sub populations?
- Triangulate with KWIB'S asset map of services and funding available to target populations
- Conduct gap analysis
- Prioritize outcomes that are not currently met
- Build a framework to help other sub-populations/programs demonstrate successful outcomes and determine ROI





# Outcomes We Feel are Relevant and Possible:

<b>Employment, Education &amp; Training</b>	<ul style="list-style-type: none"><li><input checked="" type="checkbox"/> Employment placement (subsidized or unsubsidized)</li><li><input checked="" type="checkbox"/> Employment retention (length of time)</li><li><input checked="" type="checkbox"/> Wage earned and/or progression (minimum, entry, living wage)</li><li><input checked="" type="checkbox"/> Program completion / certification (post-secondary program or internship/apprenticeship)</li></ul>
<b>Two-Generation Impacts</b>	<ul style="list-style-type: none"><li><input type="checkbox"/> Reduction in long-term public assistance (e.g., TANF, SNAP, etc)</li><li><input type="checkbox"/> Reduced involvement in child welfare system</li><li><input type="checkbox"/> Preventative / more appropriate healthcare utilization (e.g., medicaid)</li></ul>
<b>Family Stability &amp; Assets</b>	<ul style="list-style-type: none"><li><input type="checkbox"/> Reduced involvement in the justice system</li><li><input type="checkbox"/> Stable housing</li><li><input type="checkbox"/> Improved child's K-12 school attendance</li></ul>

***Homeless***

***Limited English Proficiency***

***Low Socioeconomic Status***

***Migrant***

***Special Education***

***Unaccompanied Youth***

# Action Needed From WP Committee:

## Determine sub populations

- Do we have programs directed to sub populations?
- Do we have data for sub populations?
- Do we have metrics established for sub populations?

---

**Homeless**

**Limited English Proficiency**

**Low Socioeconomic Status**

**Migrant**

**Special Education**

**Unaccompanied Youth**

- Questions?
- Thoughts?
- Comments?
- Suggestions?

